

main chamber, yet all the valves and parts requiring attention are arranged inside it, and in such a way that a very large standing space is arranged in the centre of the chamber for the manipulation and inspection of working parts.

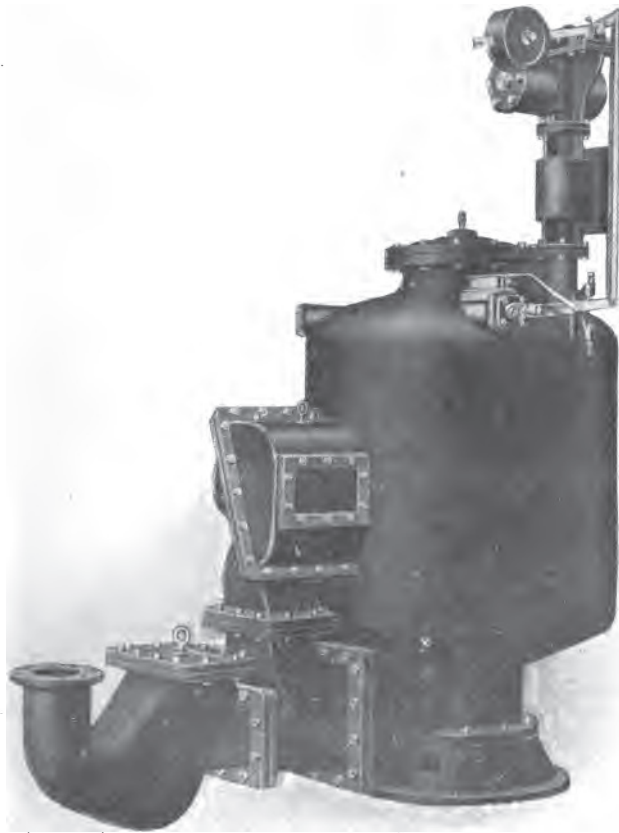


Fig. 37E. "Coombs" Pneumatic Ejector.

Very large exhaust chambers are arranged over bodies of ejectors, thus entirely silencing the exhaust.

(3) The "Coombs" arrangement for dealing with the night flow is a third important improvement. With this it is possible to store sufficient air to deal with this flow without