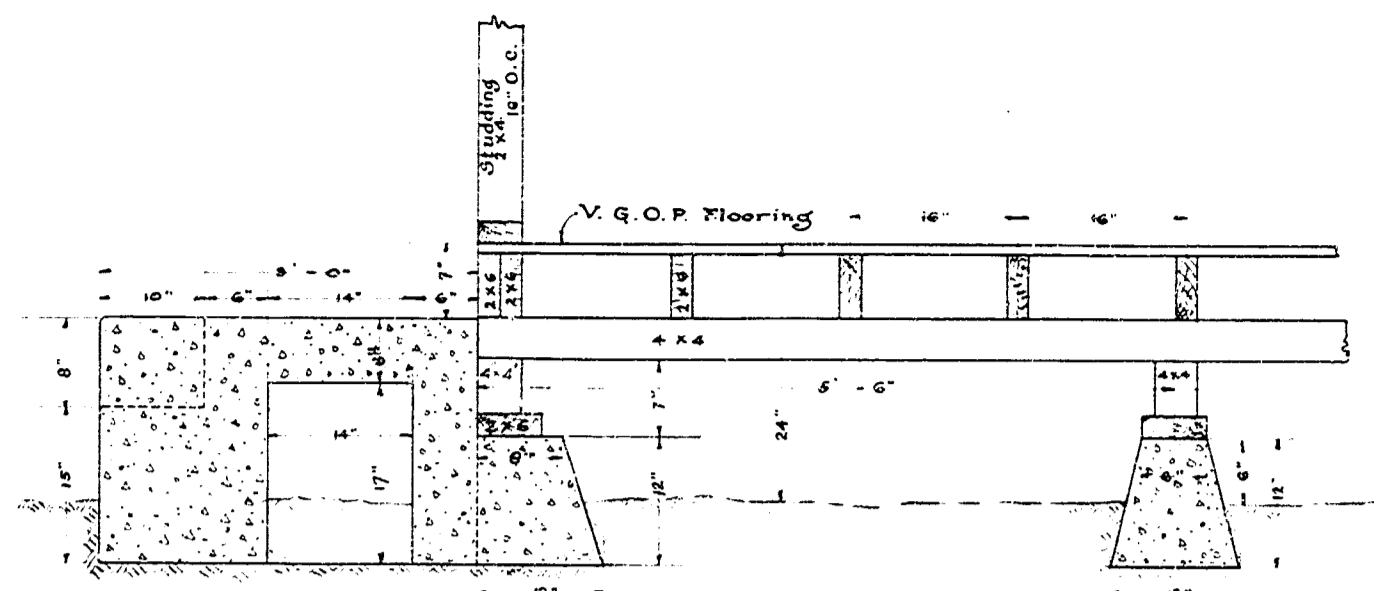
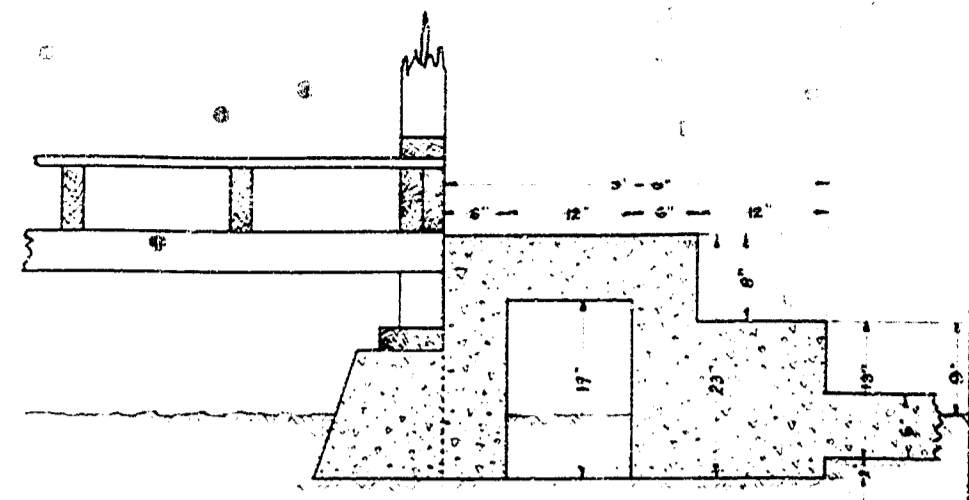


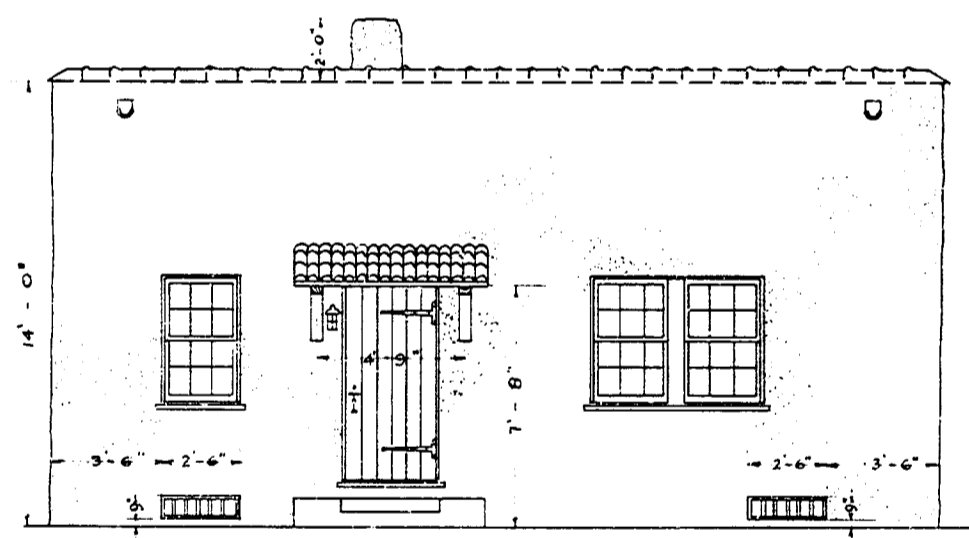
FLOOR PLAN.  
Scale 1/4" = 1'



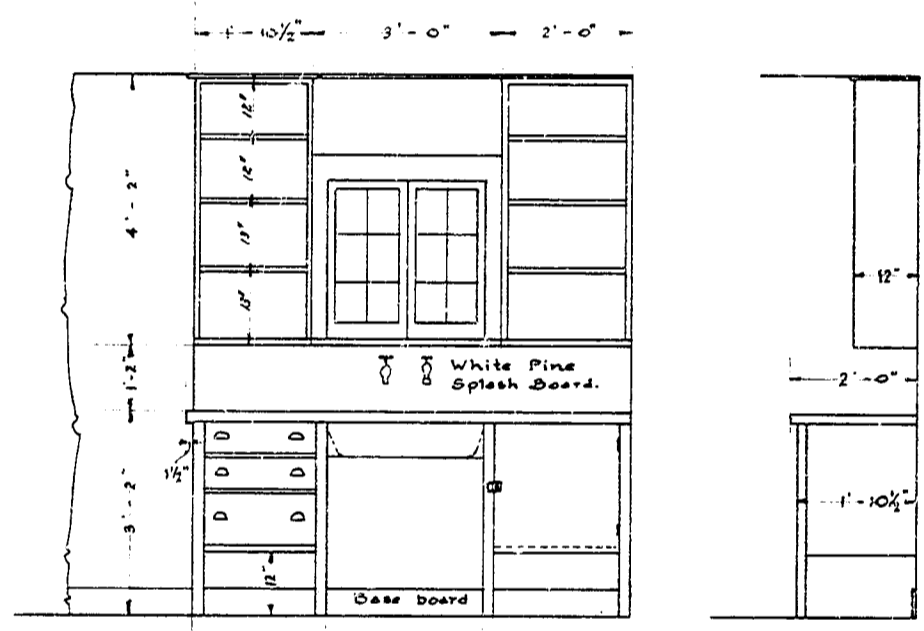
SECTION ON A-A  
Scale 1" = 1'



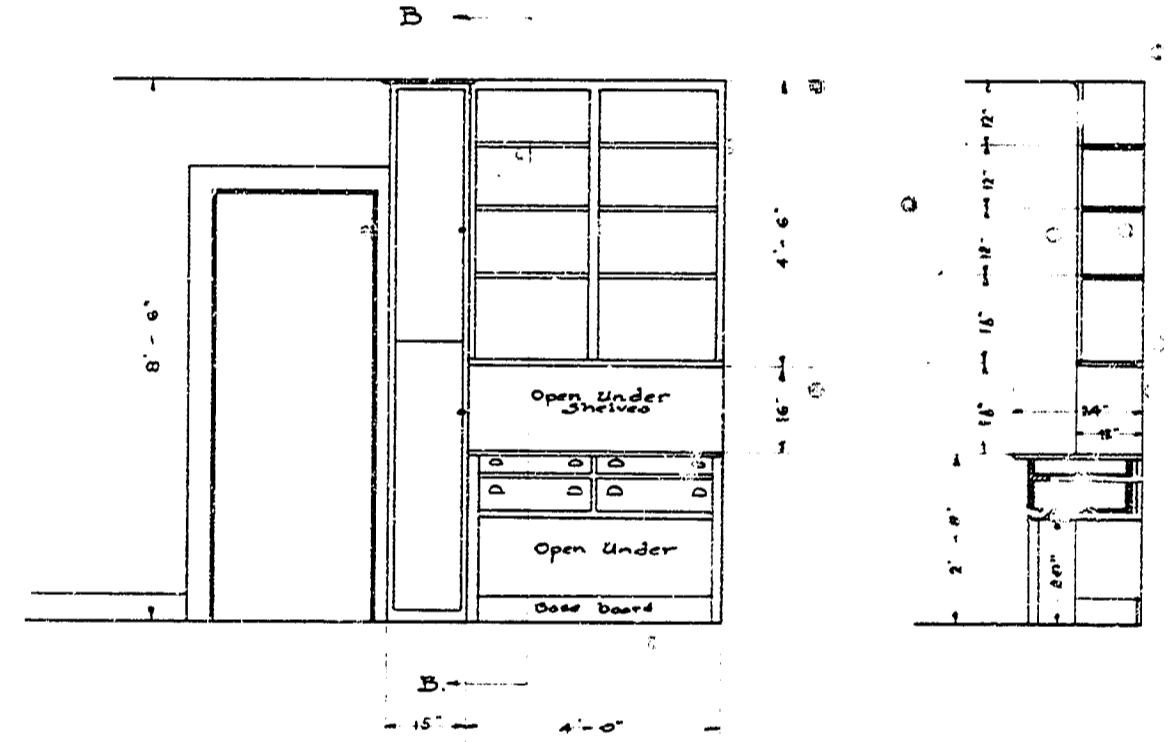
SECTION ON R-R  
Scale 1" = 1'



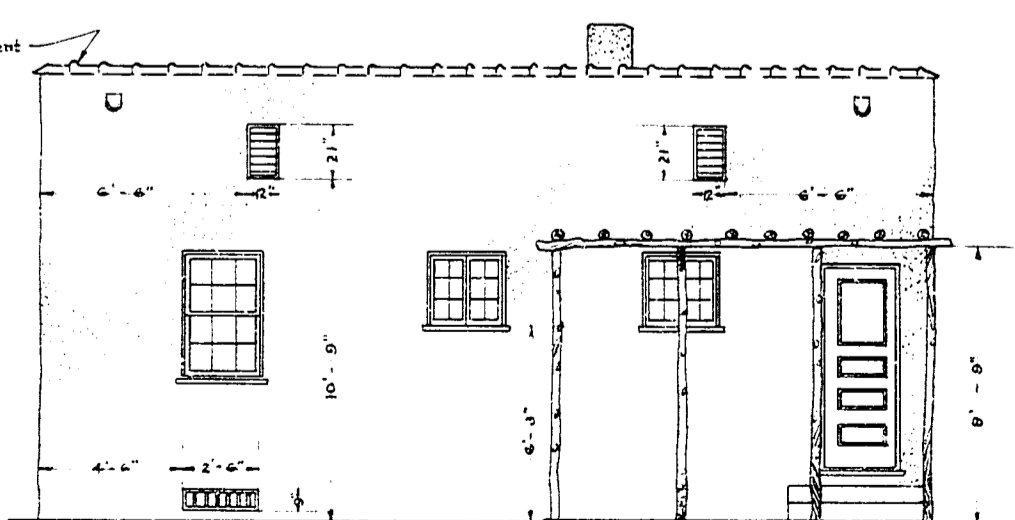
FRONT ELEVATION.  
Scale 1/4" = 1'



DETAIL OF KITCHEN SINK  
Scale 1/2" = 1 foot



DETAIL OF COOLER AND WORK TABLE.  
Scale 1/2" = 1 foot.



REAR ELEVATION.  
Scale 1/4" = 1'

CITY OF LOS ANGELES  
SECTION NO. 3  
NORTH OUTFALL SEWER  
HYPERION SEWAGE TREATMENT PLANT  
DETAILS OF ATTENDANT'S HOUSE  
FOR  
SOUTH SCREENING PLANT  
END OF CITY ROAD, NW OF COAST BLVD.  
SCALE AS SHOWN

See Index Map  
A1-593

JOHN A. GRIFFIN  
CITY ENGINEER

*John A. Griffin*  
APPROVED Feb 5<sup>th</sup> 1924

Approved Feb. 6, 1924.

The Municipal Art Commission  
of the City of Los Angeles

*Phil Blanchard*  
PRESIDENT

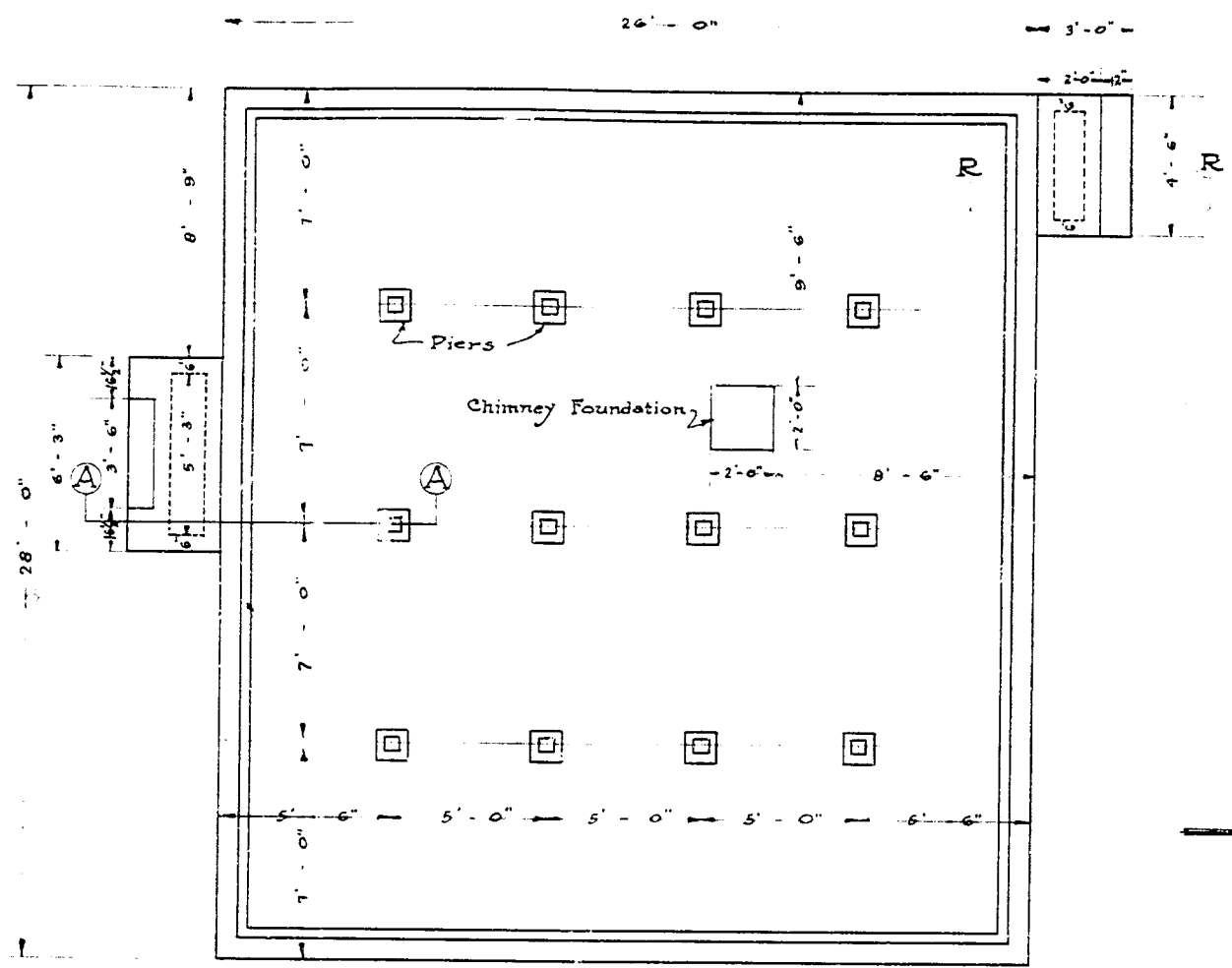
H.A. VAN NORMAN  
CONSULTING ENGINEER

*H.A. Van Norman*  
APPROVED 2-2-24

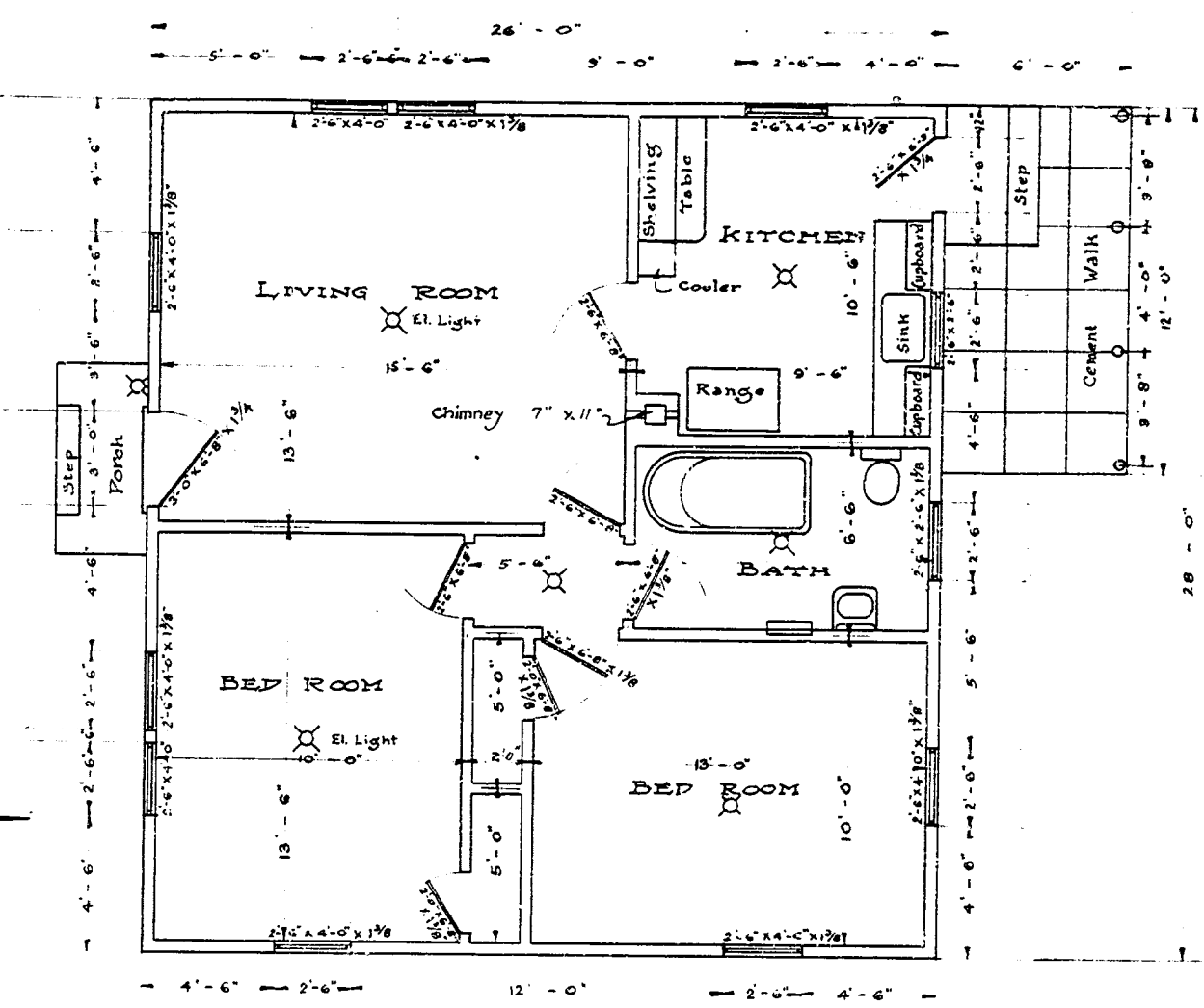
*J. J. Backus*  
SECRETARY  
Feb 13<sup>th</sup> 1924  
*1924: Long*

DESIGNED BY  
DRAWN BY *Stacy R. Finner*  
CHECKED BY *W. Greaser*  
APPROVED BY

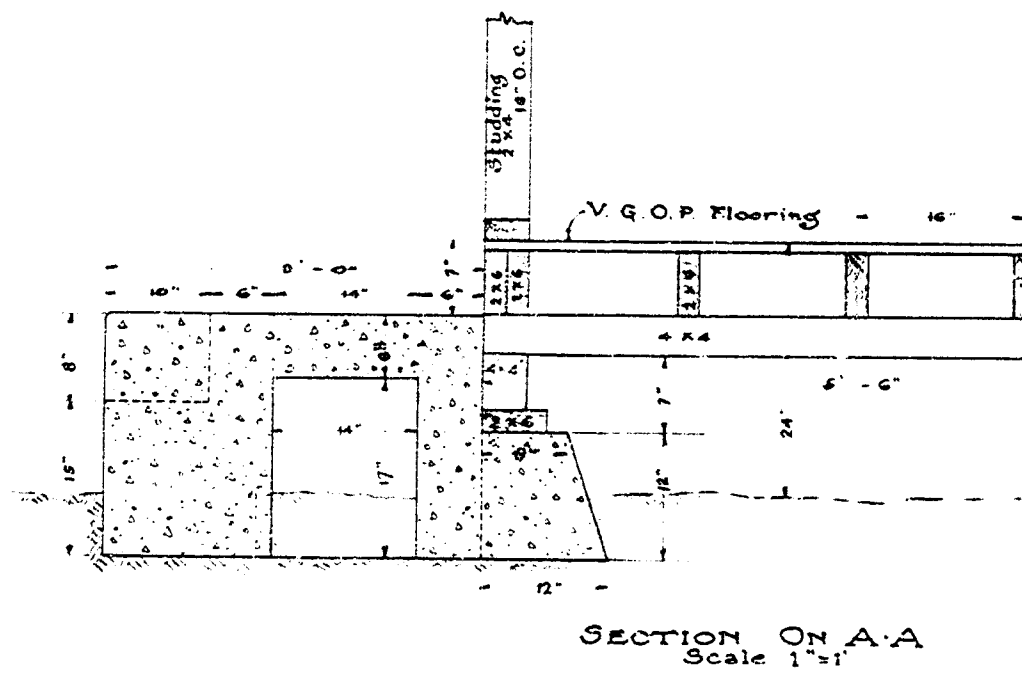
29246



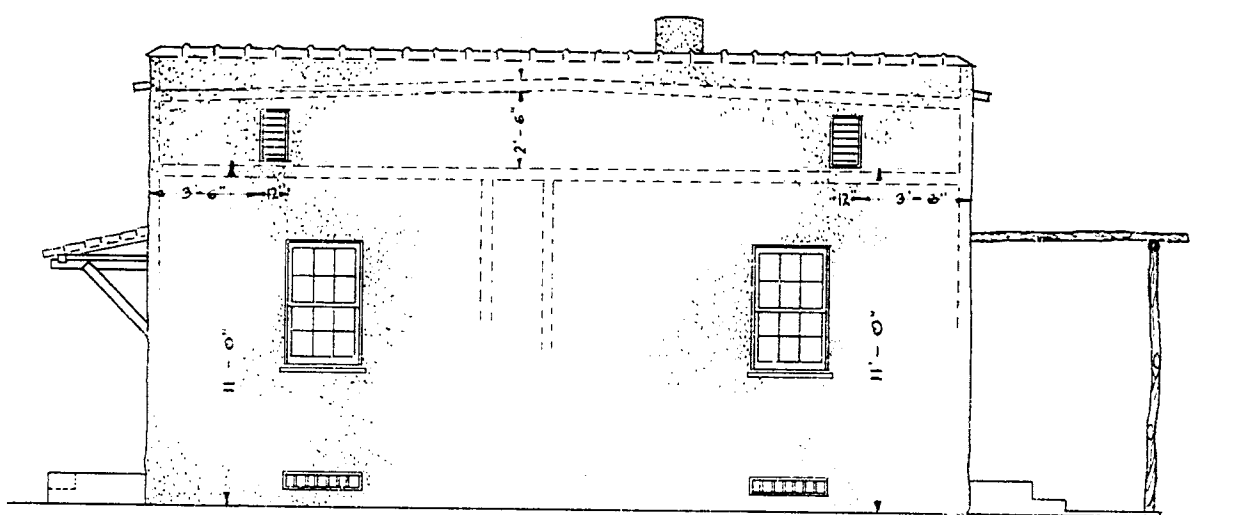
FOUNDATION PLAN.  
Scale 1/4" = 1'



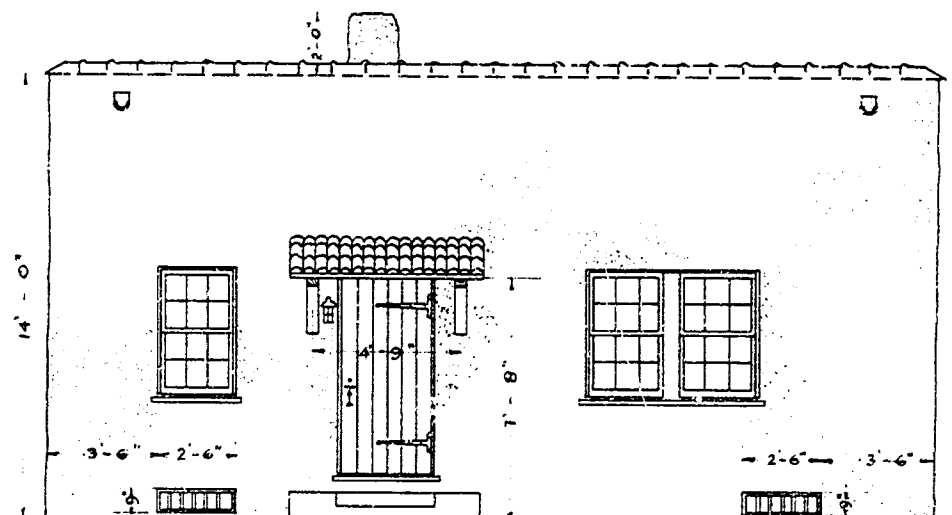
FLOOR PLAN.  
Scale 1/4" = 1'



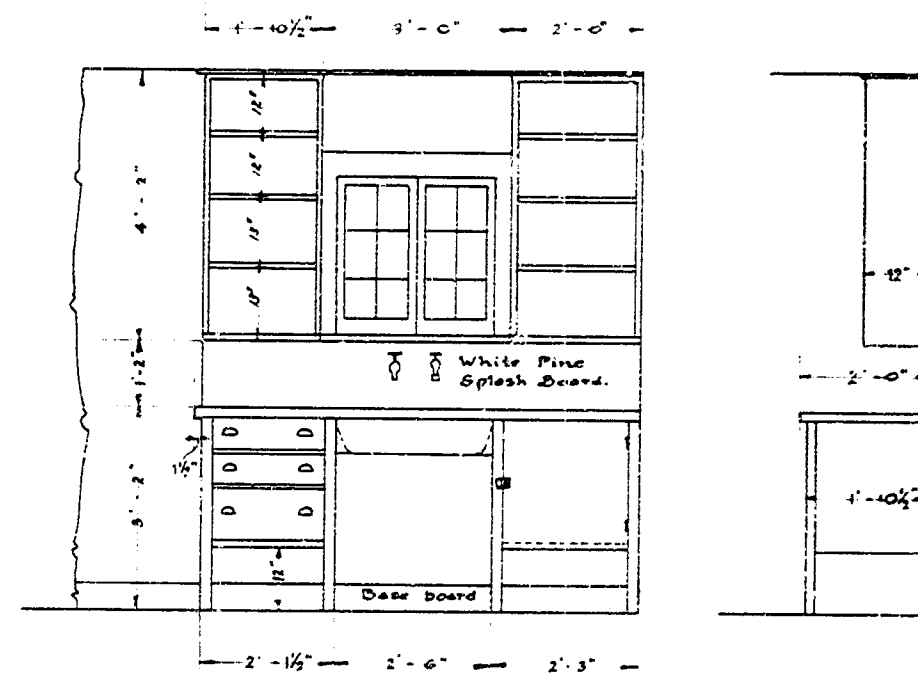
SECTION ON A-A  
Scale 1" = 1'



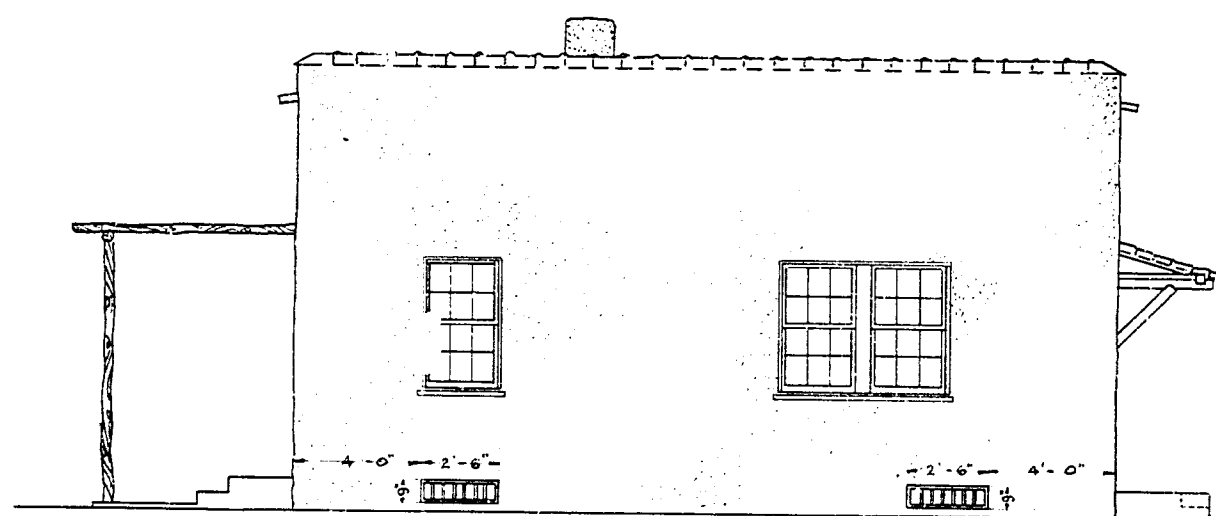
EAST END ELEVATION.  
Scale 1/4" = 1'



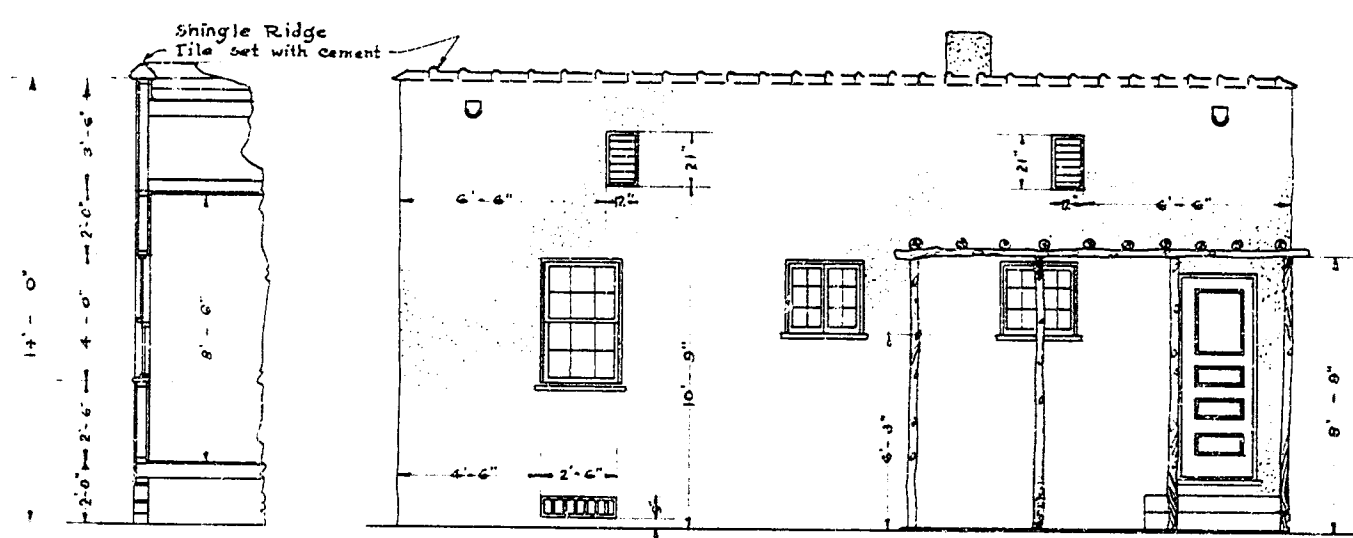
FRONT ELEVATION.  
Scale 1/4" = 1'



DETAIL OF KITCHEN SINK  
Scale 1/2" = 1 foot



WEST END ELEVATION.  
Scale 1/4" = 1'



REAR ELEVATION.  
Scale 1/4" = 1'

CITY OF LOS ANGELES  
**SECTION NO. 1**  
NORTH OUTFALL  
**HYPERION SEWAGE TREATMENT PLANT**  
DETAILS OF ATTENDANCE BUILDING  
FOR  
**SOUTH SCREENING**  
END OF CITY ROAD, INGLEWOOD, CALIF.  
SCALE AS SHOWN

Approved Feb. 6, 1924.

JOHN A. GRIFFIN  
CITY ENGINEER

*John A. Griffin*  
APPROVED Feb. 5<sup>th</sup> 1924

The Municipal Art Commission  
of the City of Los Angeles

*Phil Blanchard*

*J. J. Baskin*  
Feb. 7, 1924