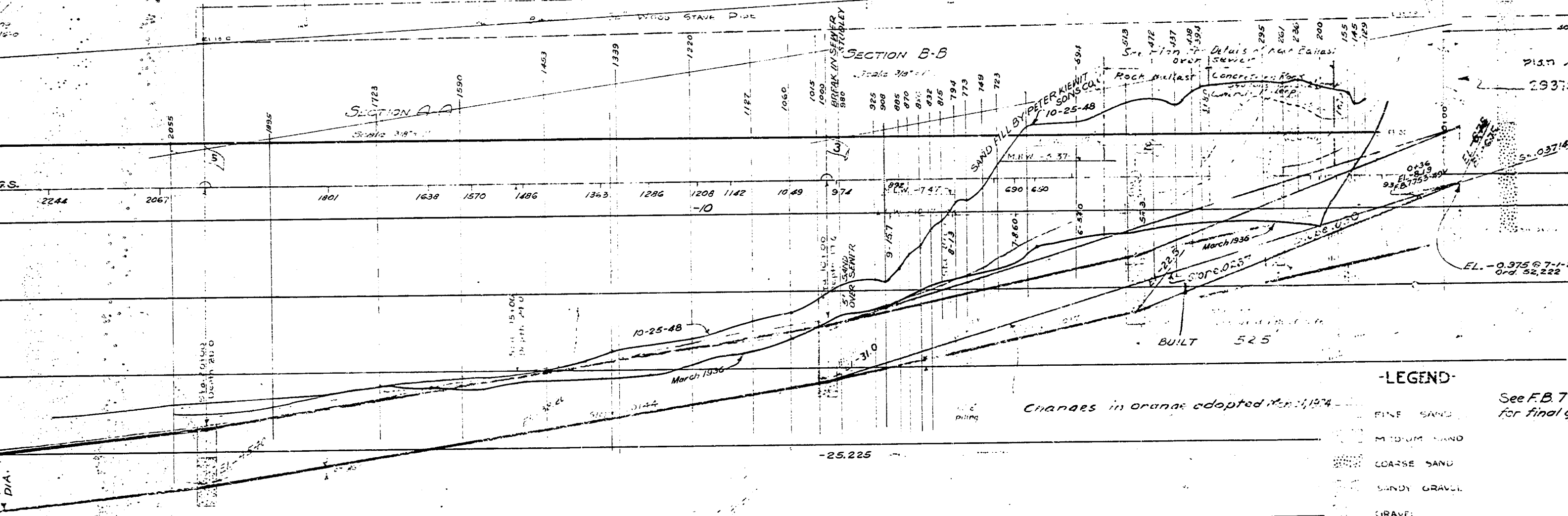


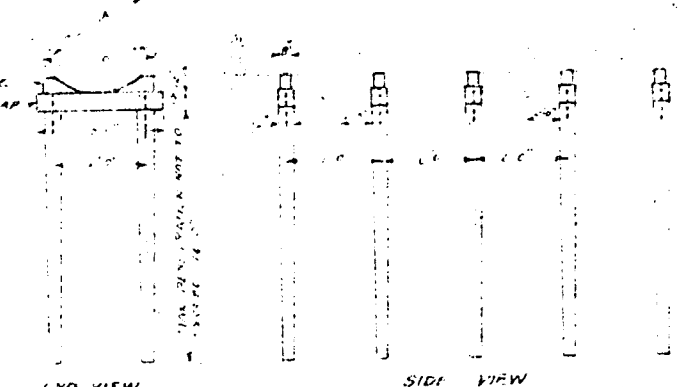
- NOTES**
1. A bid by Contractors in accordance with the following type of Sewer is requested, viz: Submarine or under ground sewer of cast iron pipe sewer, the work to be done in accordance with the instructions adopted by the Board of Public Works.
 2. For further details and descriptions of work to be done reference shall be made to the following:
 - (a) Submarine Sewer, Concrete Pipe, 7.0 Dia., 29202 & 29332 and No. 25097
 - (b) Sewer, Concrete Pipe, 7.0 Dia., 29202 & 29332
 - (c) Sewer, Concrete Pipe, 7.0 Dia., 29202 & 29332
 3. The City Engineer is to be notified of the location of the sewer line and of the location of the manholes and of the location of the public utility lines.
 4. Sewer to be built in accordance with the following:
 - (a) Order No. G.F. 7400
 - (b) Return to the City Engineer for approval
 5. The Board of Public Works is to be notified of the location of the sewer line and of the location of the manholes and of the location of the public utility lines. Should they be found to be in conflict with the location of the public utility lines, the City Engineer shall not warrant the indications of the location of the sewer line and of the location of the manholes and of the location of the public utility lines in flags. The location of the sewer line and of the location of the manholes and of the location of the public utility lines shall be noted.
 6. A Manhole is to be built in accordance with the following:
 - (a) Order No. G.F. 7400
 - (b) Return to the City Engineer for approval



-LEGEND-
 See F.B. 7753-49 for final grades

- FINE SAND
- MEDIUM SAND
- COARSE SAND
- SAND GRAVEL
- GRAVEL

Note.
 Changes shown in blue, between Sta. 0-25 and Sta. 5+00 authorized by the Board of Public Works Feb. 4, 1924.



METHOD OF SUPPORTING CAST IRON OR CONCRETE PIPE BETWEEN STA. 1+00 AND STA. 2+00 SCALE 1/4" = 1'-0"

CITY OF LOS ANGELES
SECTION NO. 1
 NORTH OUTFALL SEWER
 PLAN AND PROFILE

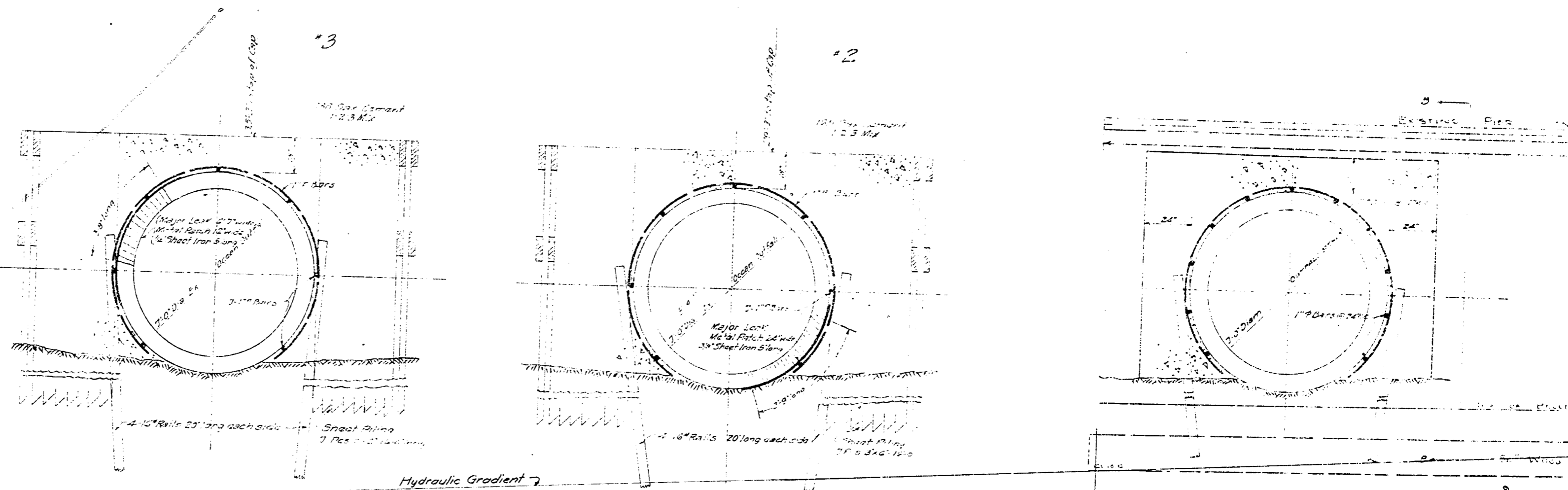
APPROVED
 CITY ENGINEER

29084

7'-0" DIA. PIPE

Precast Reinforced Concrete Pipe

PLAN



STA 9+42

Scale 3/4" = 1'

STA 3+30

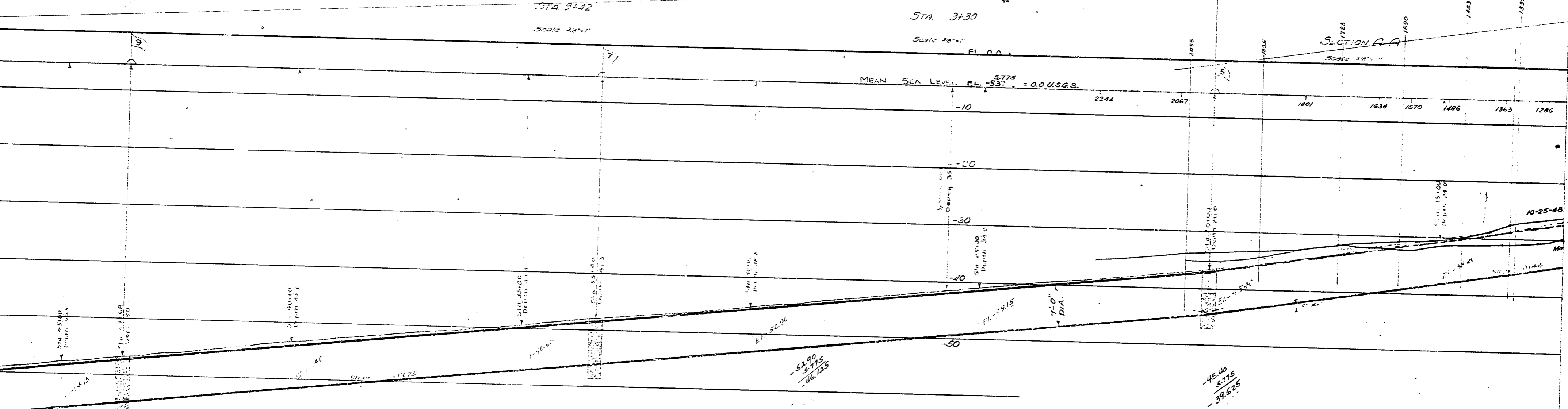
Scale 3/4" = 1'

EL. 0.0

MEAN SEA LEVEL EL. 5.775 = 0.0 U.S.G.S.

SECTION A-A

Scale 3/4" = 1'



PROFILE

