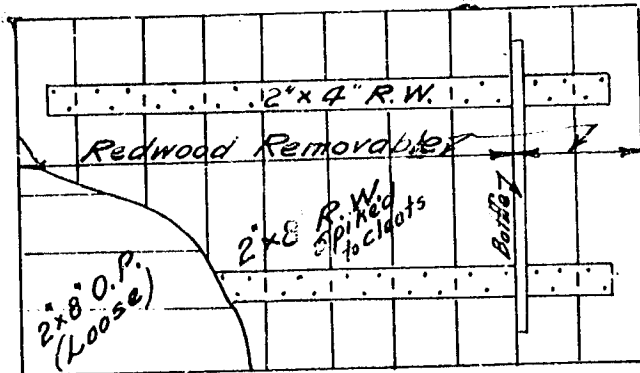
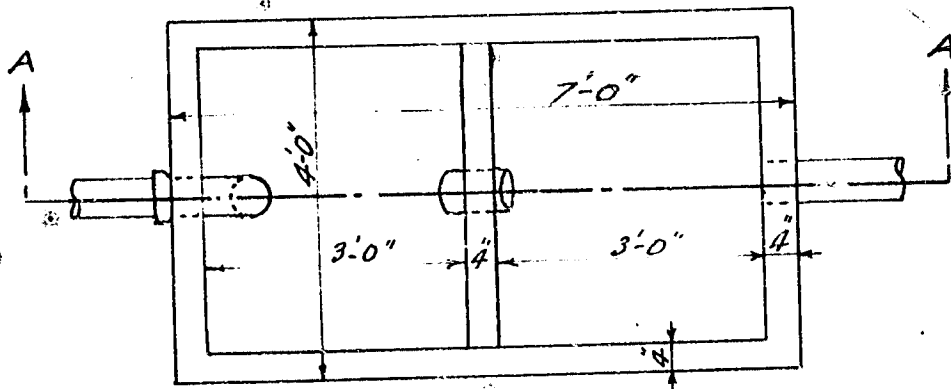


CITY OF LOS ANGELES.  
**STANDARD SEPTIC TANK,**  
 FOR FAMILIES OF SIX PERSONS.  
 A.C. Hansen City Engineer.

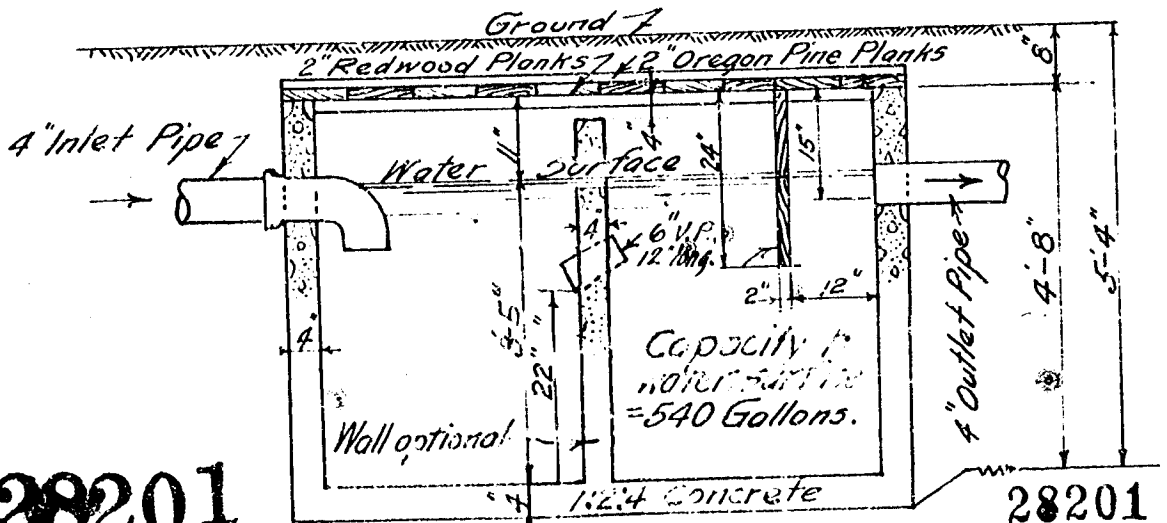
Scale: 1" = 2'  
 Approved 10-25-1919.  
 A.C. Hansen  
 City Engineer.



COVER



PLAN



SECTION A-A

28201

28201