

GENERAL PLAN

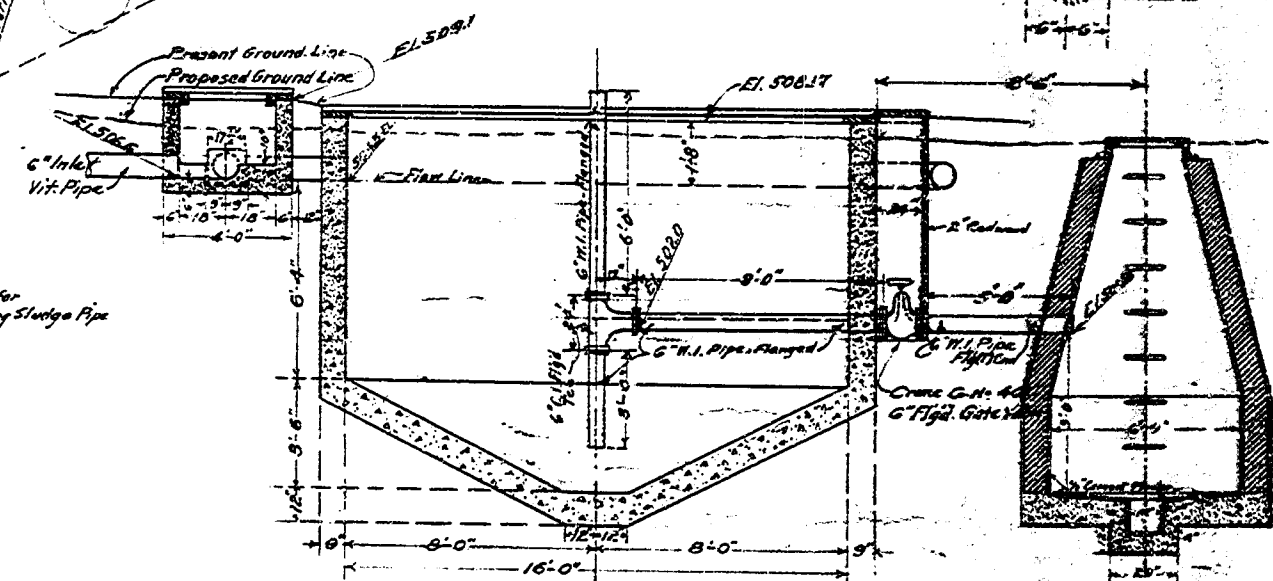
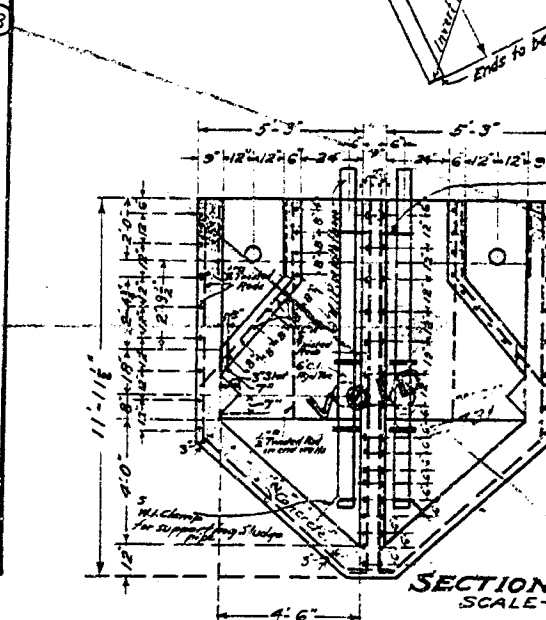
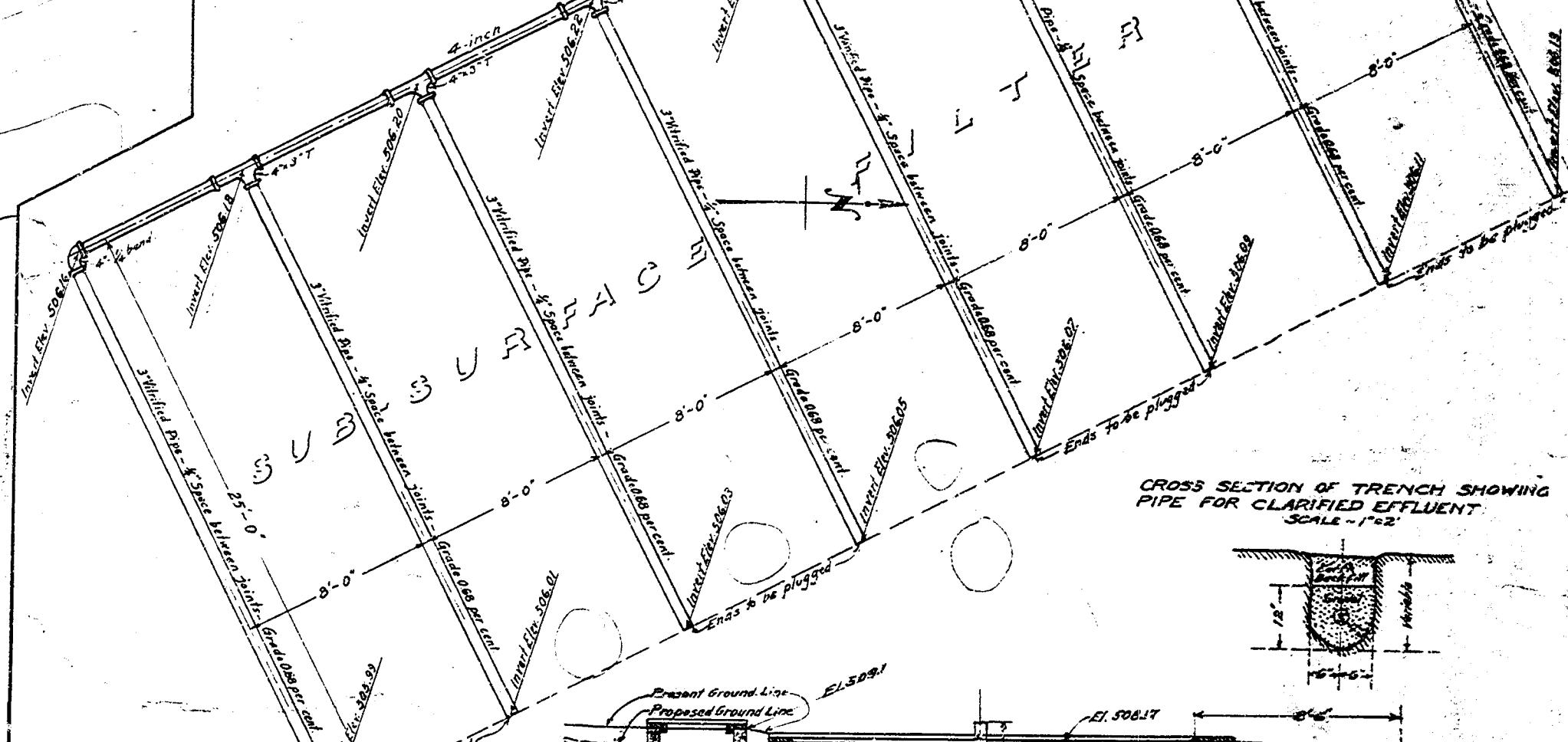
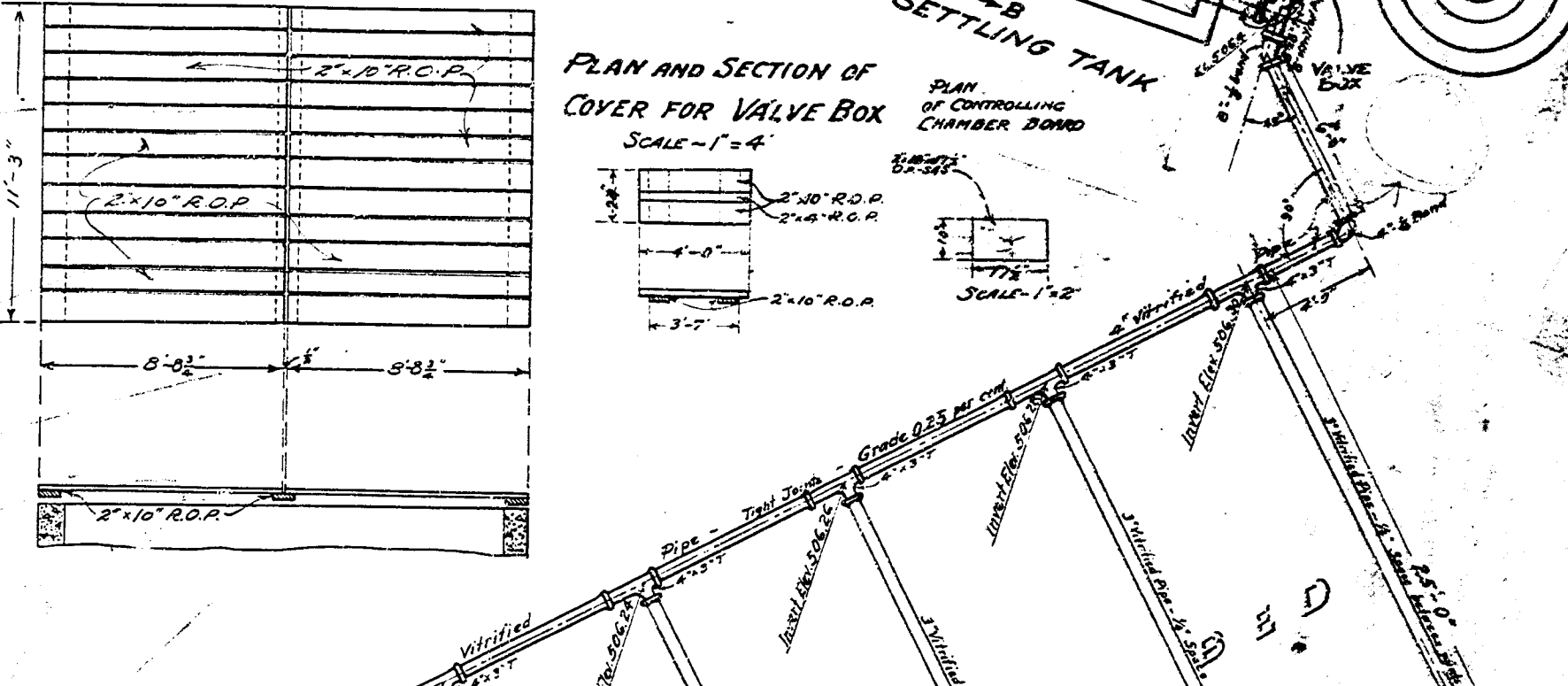
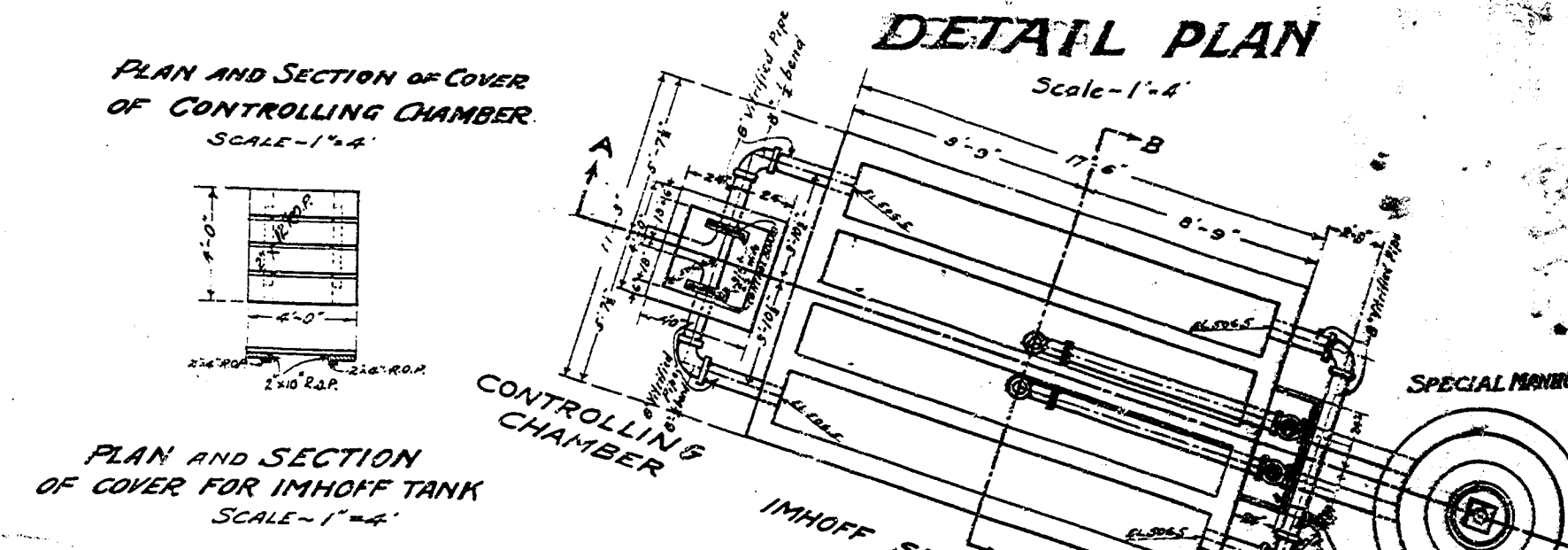
SCALE - 1" = 100'

List of Reinforcing Rods - 1/2" Twisted.

48 pieces - 19.5' long	936'
8	120'
4	100'
4	40'
4	48'
4	35'
4	36'
4	19.6'
4	38'
4	34'
4	30'
4	26'
4	22'
4	18'
4	14'
4	10'
4	6'

SUMMARY

- (a) Collection System - 450 lin. ft. 6" W.I. Pipe Sewer.
- (b) Treatment Plant and Connecting Pipes including Controlling Chamber, Reinforced Concrete Imhoff Tank - 28.6 cu yds. Plan Concrete Controlling Chamber - 1.19 cu yds.
 - Steel Reinforcing Rods - 1/2" Twisted, 1523 @ 6" pitch, 1278'
 - Lumber - 536 bd. ft. 2" x 4", 120 bd. ft. 2" x 6"
 - Vitrified Pipe - 19 lin. ft. 6" W.I. Pipe, including 3-6" x 1/2" bends, 1-6" x 1/2" bend at 6" x 6" T.
 - W.I. Pipe and Fittings - 2-pcs. 6" W.I. Pipe @ 6" long, Thread (1) and (1) - 2" W.I. - 4-0" - both ends, 2-6" W.I. - 5-0" - (1) end, 2-6" C.I. Pipe Tees, F & D, bolts, gaskets, 10-11/2" C.I. Screw Flanges, F & D, 2-6" Crane Co. No. 461 C.I. Pipe Gate Valves, F & D, both ends.
- (c) Disposal System - 64 lin. ft. 4" W.I. Pipe incl. 7-4" x 3" x 2-4" bends, 200 lin. ft. 3" W.I. Pipe, Gravel Fill - 7 cu yds. gravel, 1 Special Manhole - 6' diameter, (checked by F.W. 3-10-17)



NOTE: Manhole to be built in accordance with Plan No. 26768 except that bottom is to be six (6) feet in diameter and have central pocket structure (2) inches square, as shown above, but with no channels, flanges or joints, except as shown above.

PLAN AND DETAILS OF SEWAGE DISPOSAL PLANT

FOR FIELD HOUSE AT

GRIFFITH PARK GOLF LINKS

HOMER HAMLIN, CITY ENGINEER
DECEMBER, 1916

Approved 1-11-17
Homer Hamlin, City Engineer.

By *A. Hamilton* Chief Deputy.

27748

DESIGN AND DETAILS BY *William Hamlin* 12-12-16
DRAWN BY *RUTEEDGE and CLYDE*
CHECKED BY *Hamilton* 1-10-17

Note: See Plan No. 27731 for reinforcing and details of Imhoff Tank.

