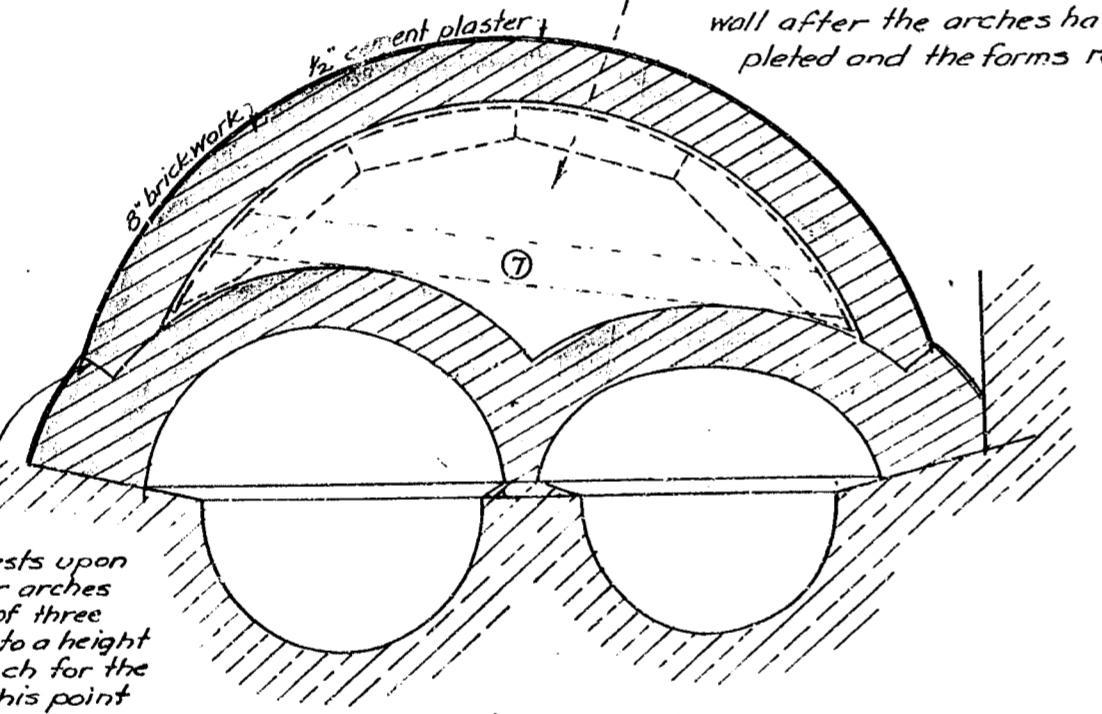


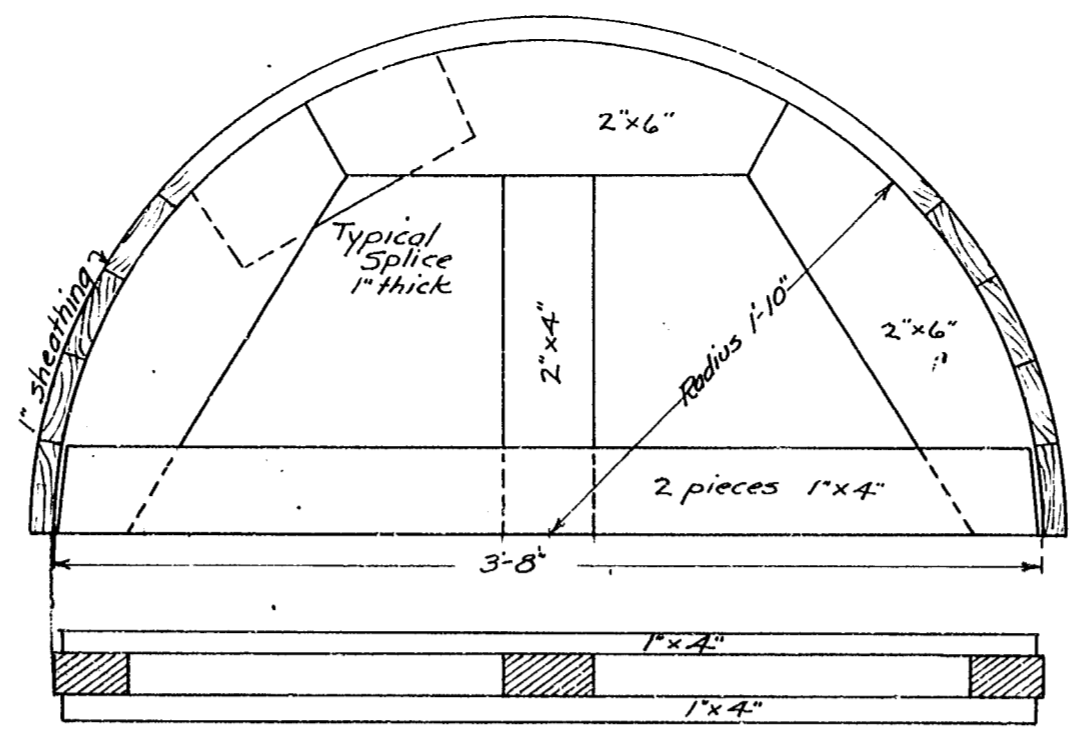
Section on A-C
Scale: 1/2" = 1'

Note: Enclose the area at the end of the larger arch, and between this arch and the two smaller ones with an 8" brick wall after the arches have been completed and the forms removed.

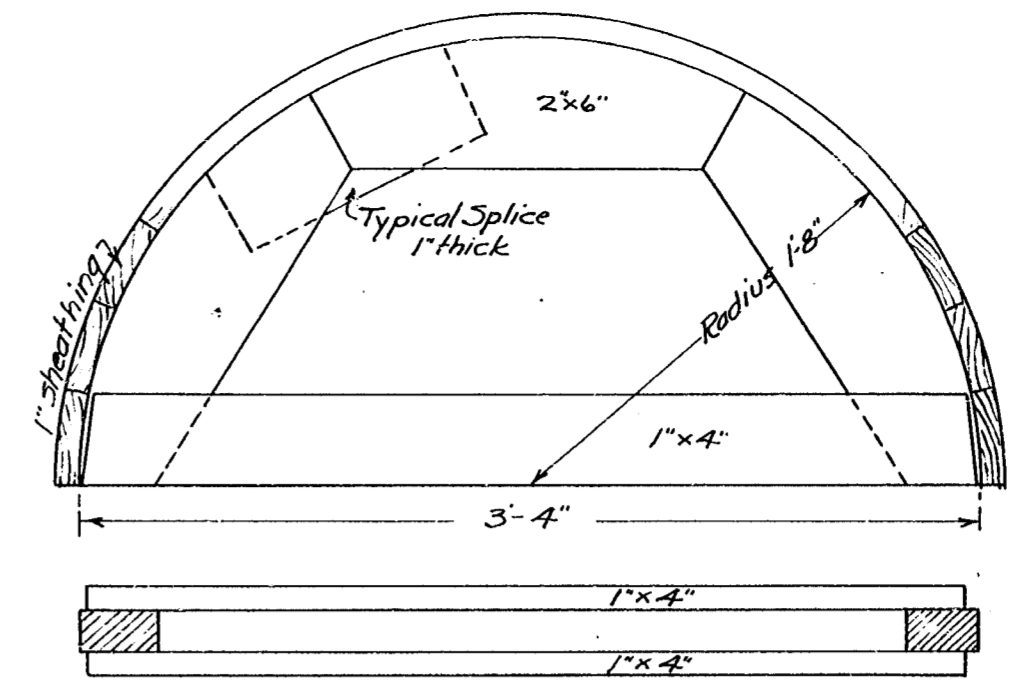


Section on D-E
Scale: 1/2" = 1'

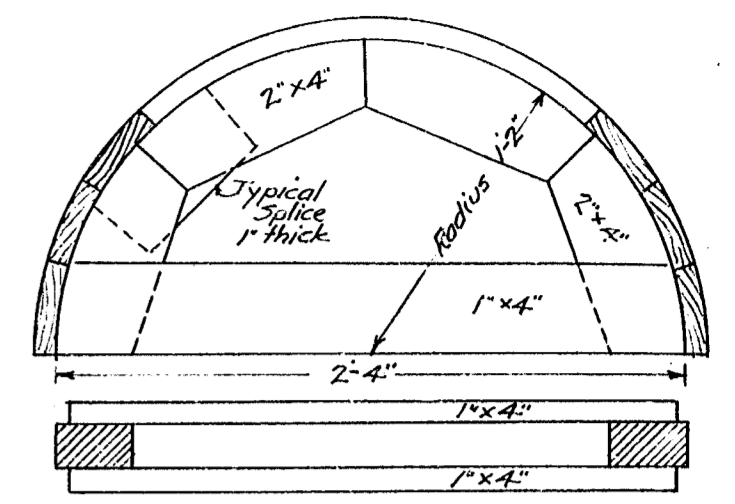
Note: Where the larger arch rests upon either of the two smaller arches the latter shall be built to a height sufficient to form a haunch for the larger arch. Beyond this point they shall be built of two courses.



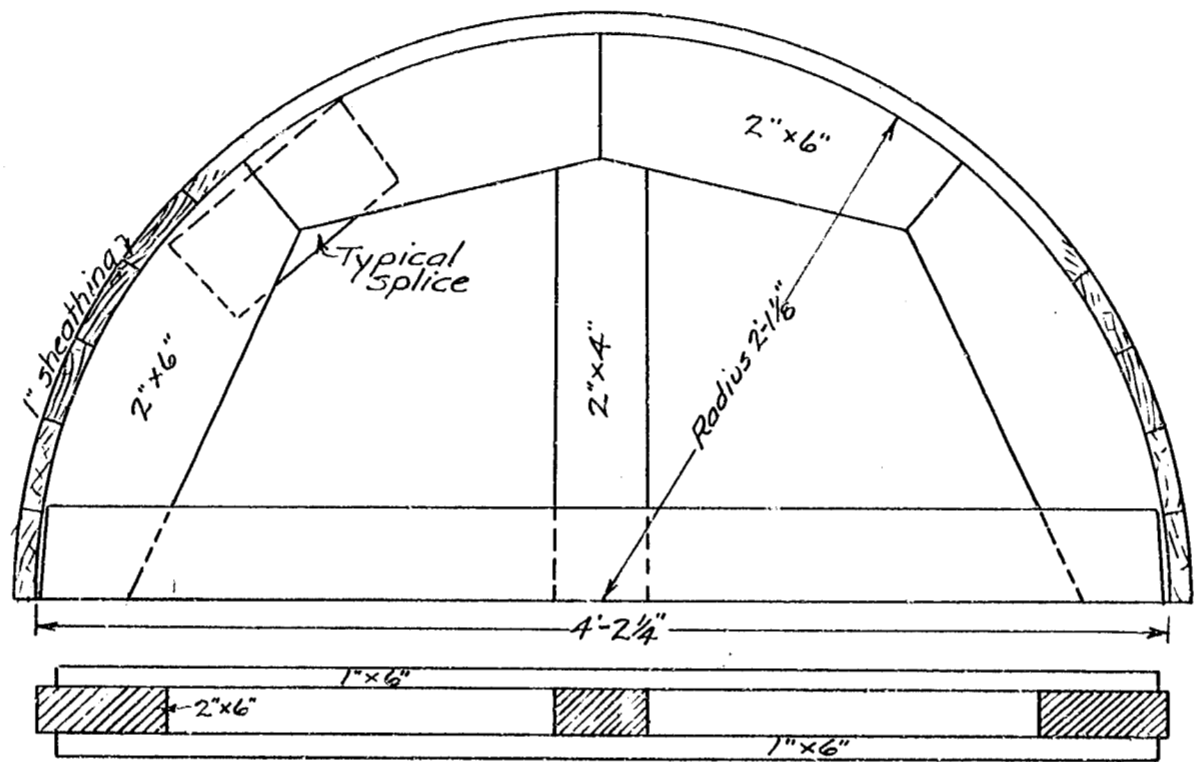
Arch Center No. 3
Scale: 1 1/2" = 1'-0"



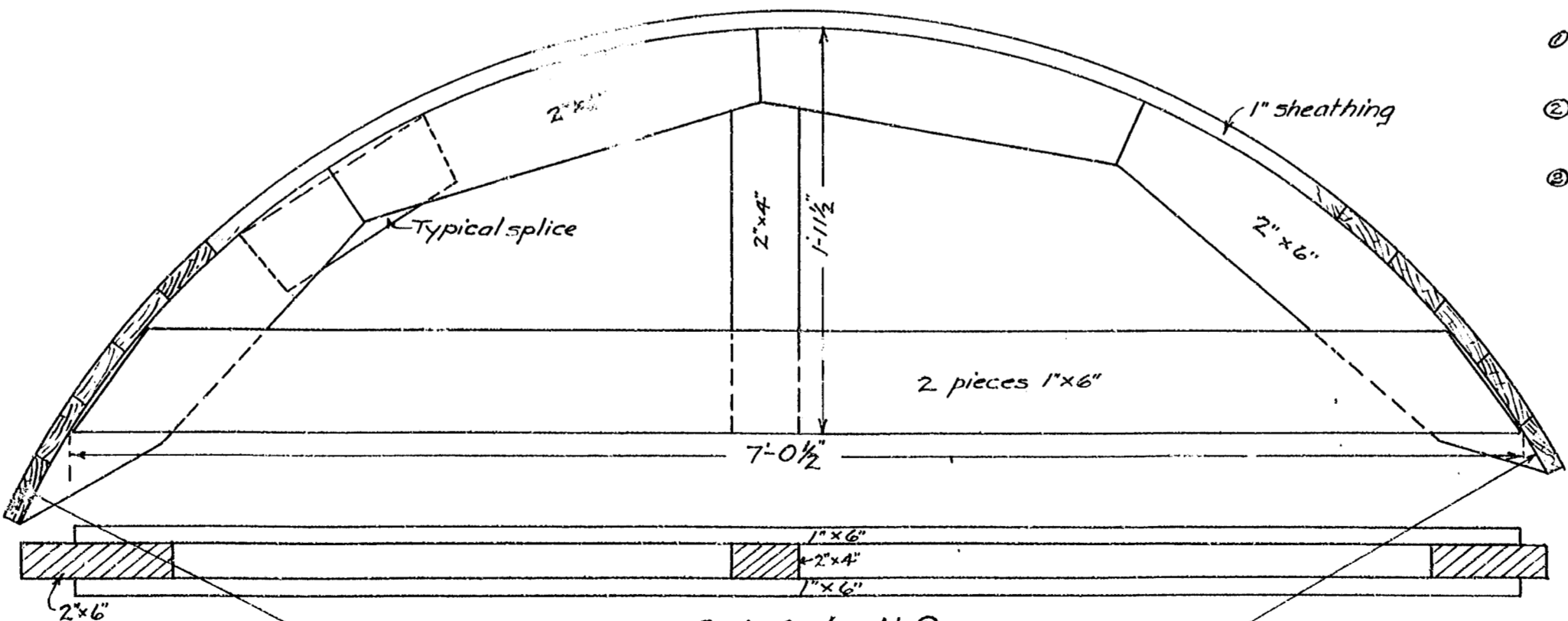
Arch Centers Nos. 2 and 4
Scale: 1 1/2" = 1'-0"



Arch Centers Nos. 1 and 5
Scale: 1 1/2" = 1'-0"



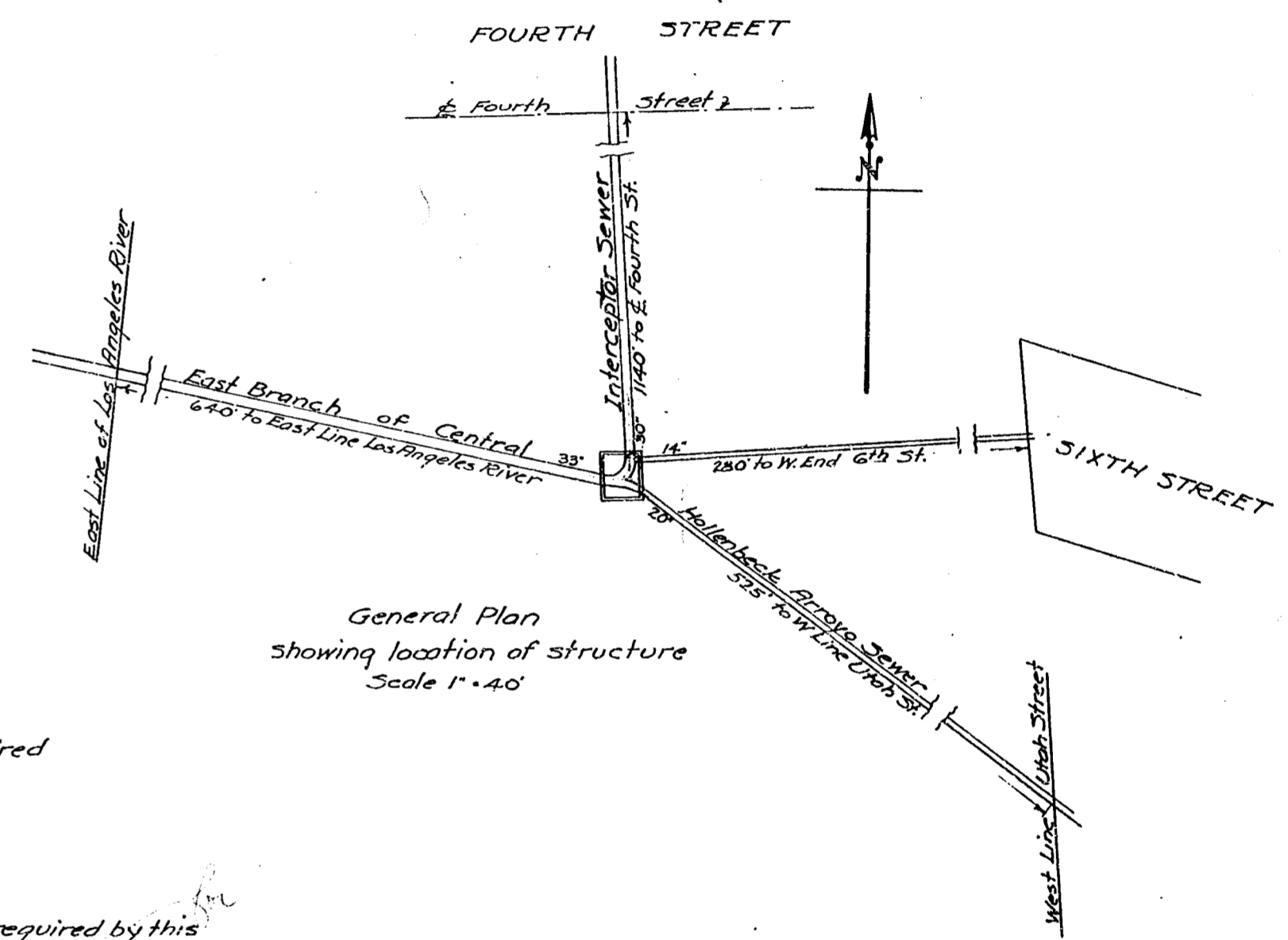
Arch Center No. 6
Scale: 1 1/2" = 1'-0"



Arch Center No. 7
Scale: 1 1/2" = 1'-0"

Note: This form to rest upon the two smaller arches as shown in Sec. D.E.

Radius = 4'-1/2"



General Plan
Showing location of structure
Scale: 1" = 40'

Material Required
3000 Brick (approx)
27 Cu. Yds Backfill

Notes

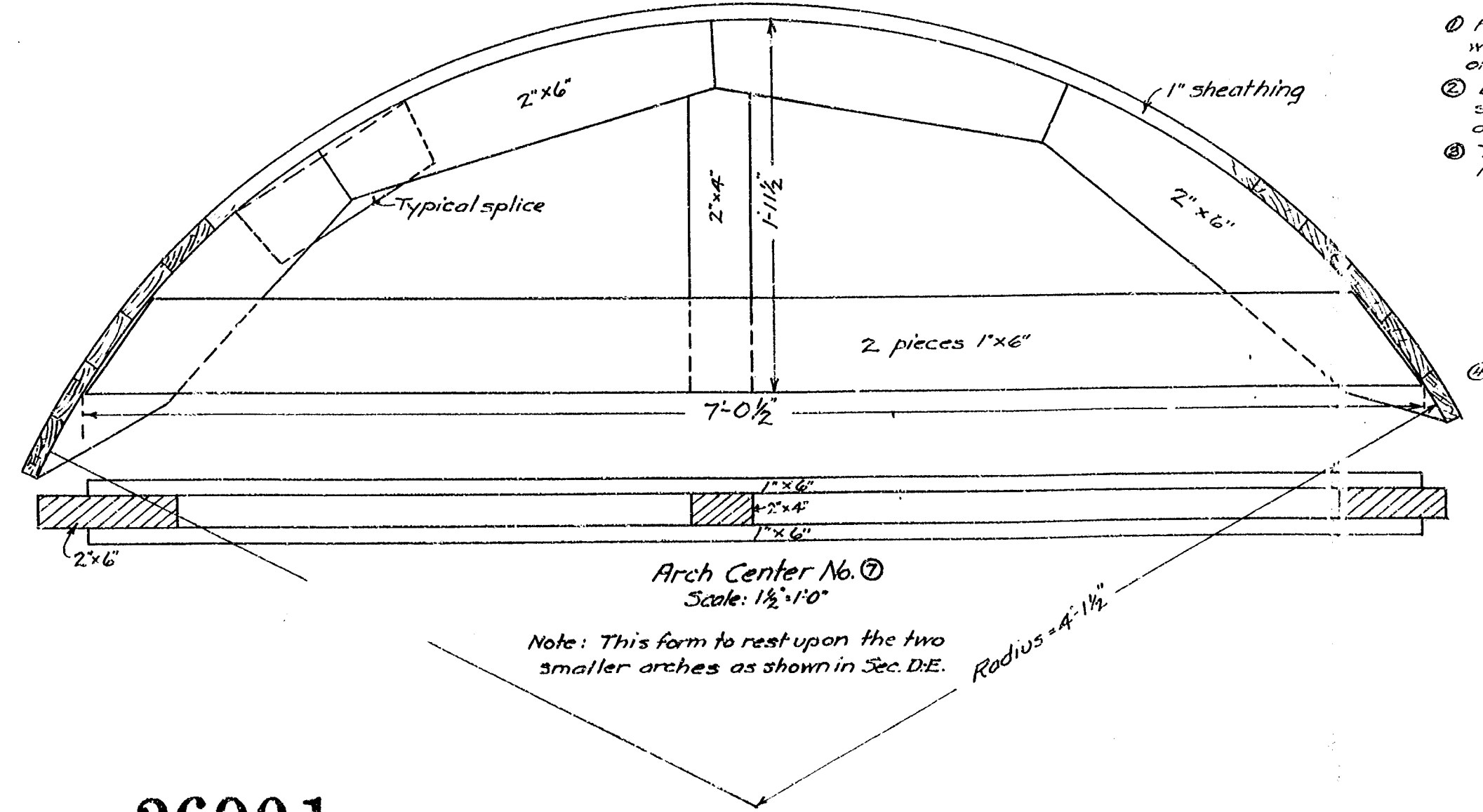
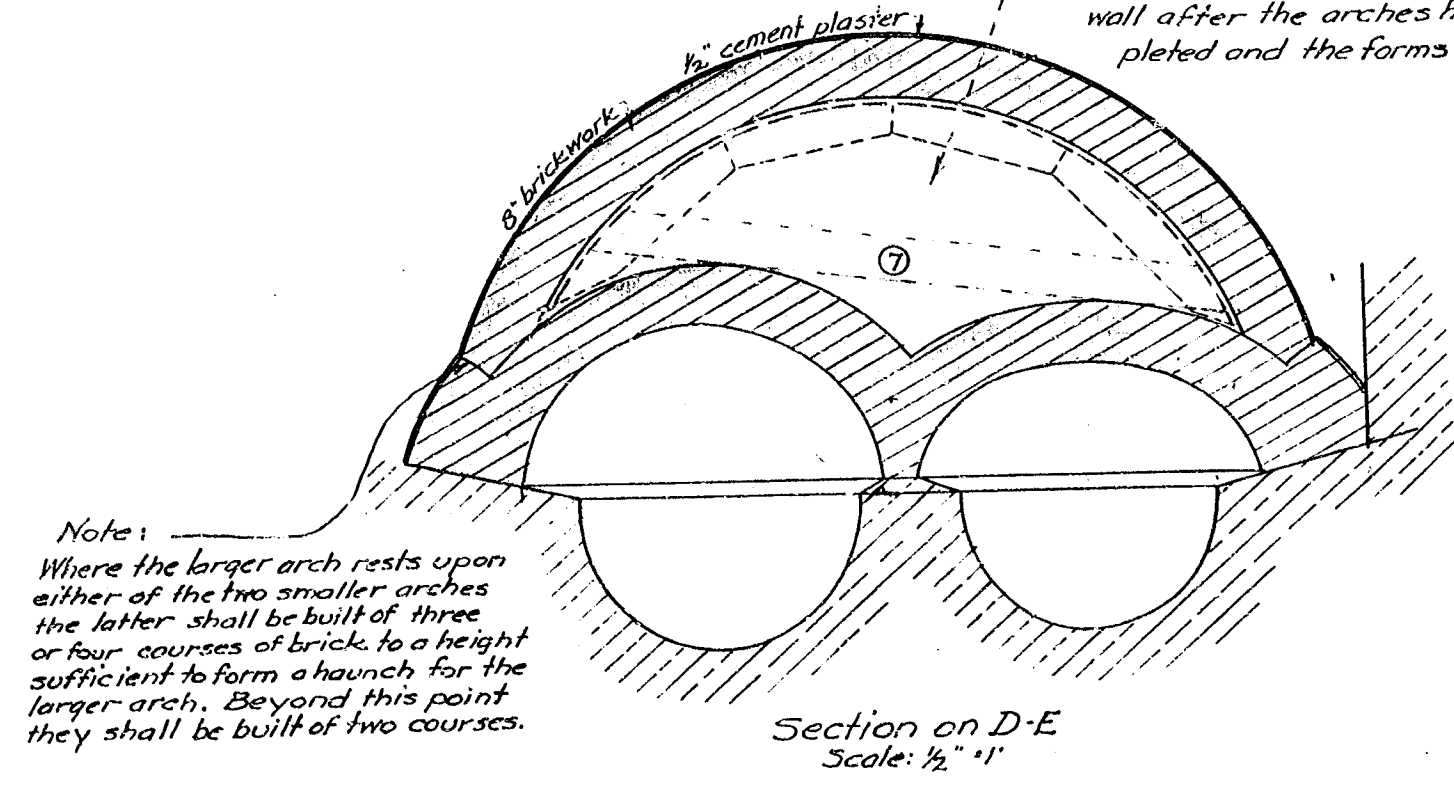
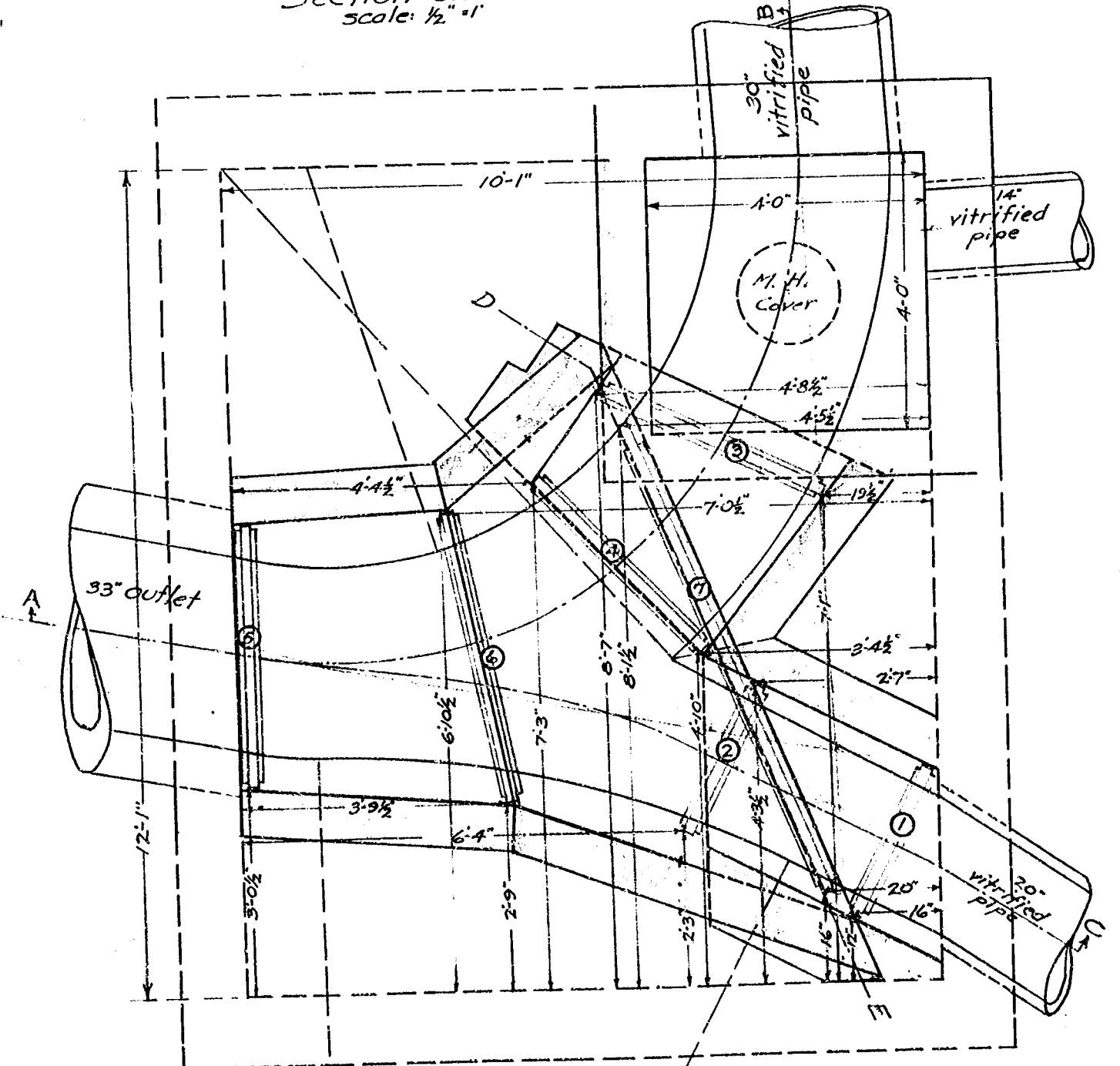
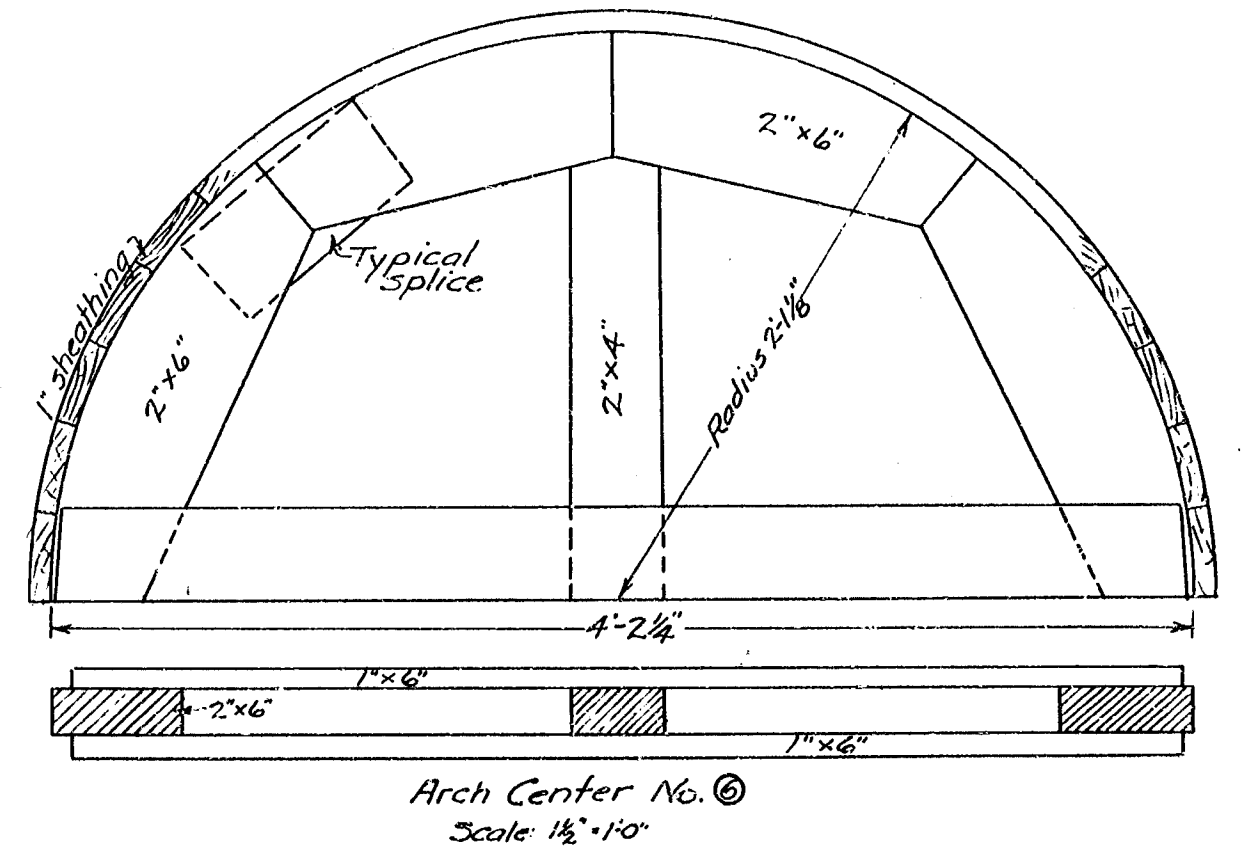
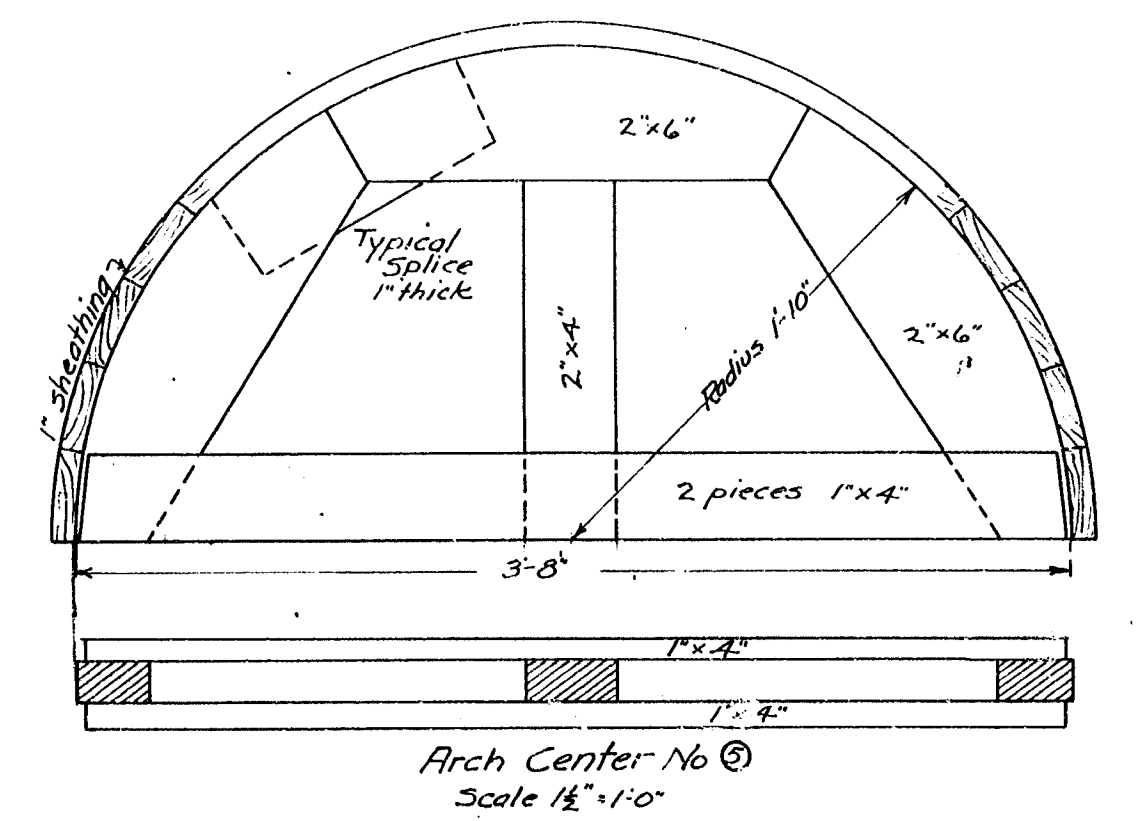
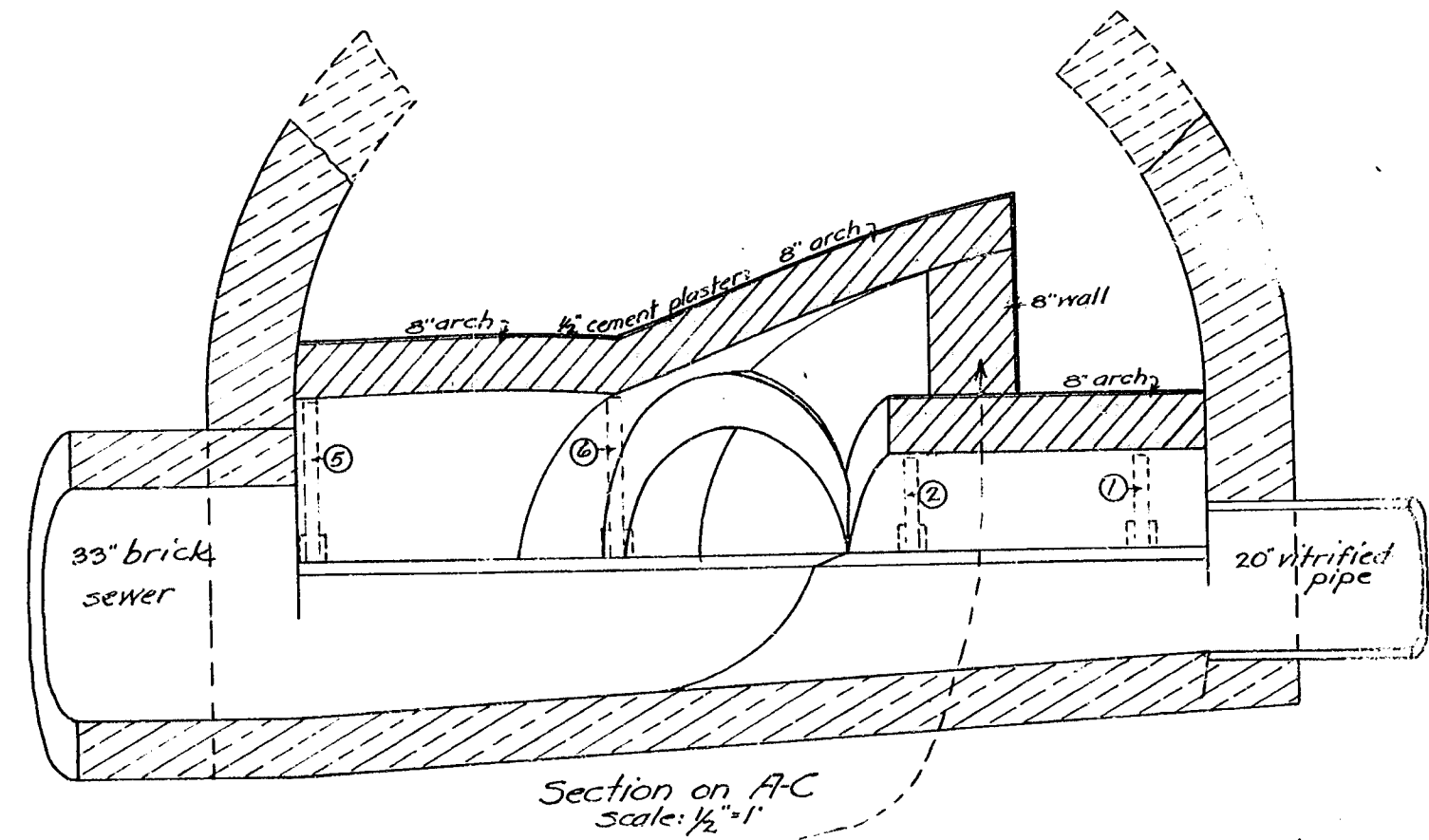
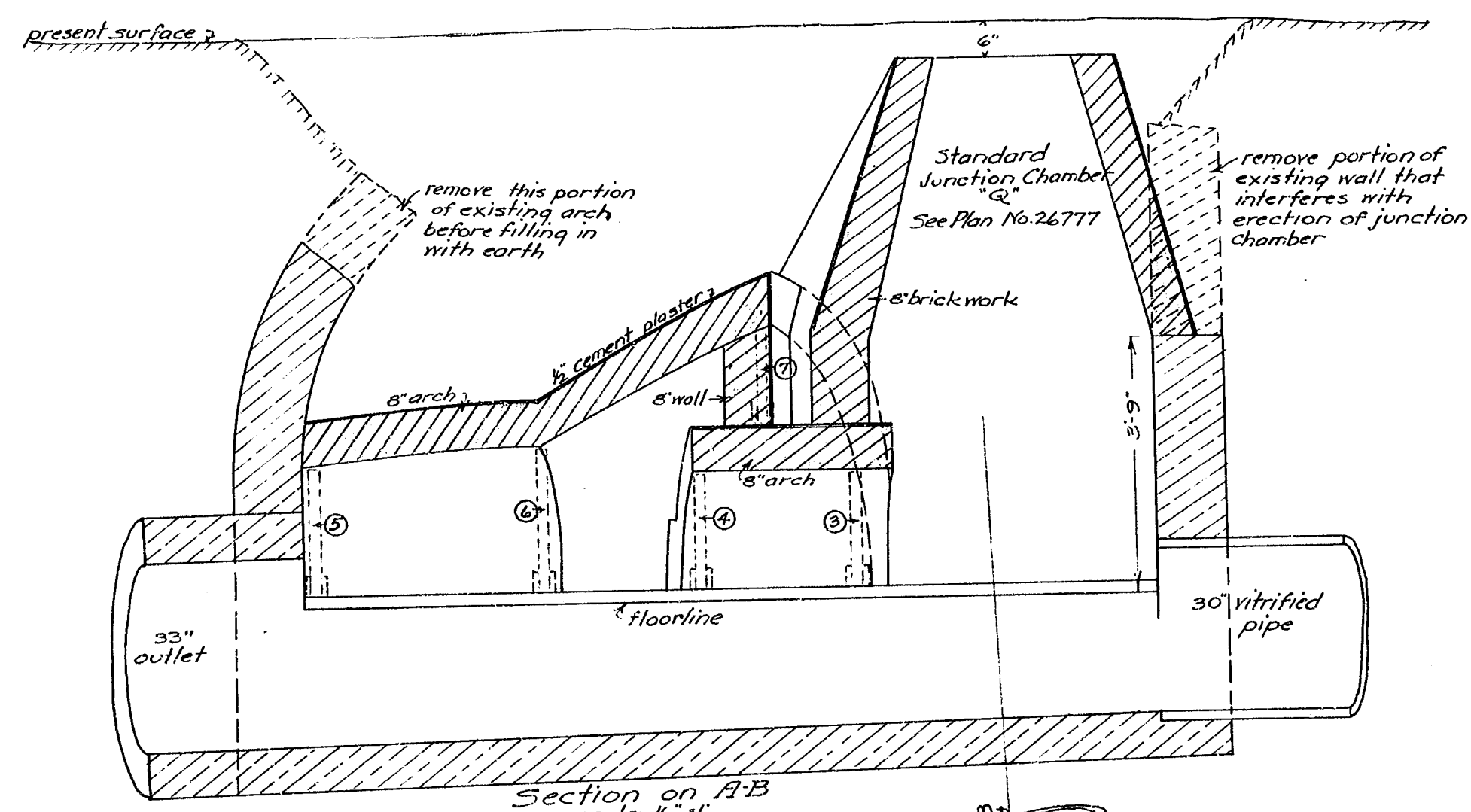
- 1 All material and labor required by this work shall conform to the requirements of Specifications No. 95 (N.S.)
- 2 Brickwork to be placed as shown hereon shall be in accordance with Section 40 of Specifications No. 95 (N.S.)
- 3 The contractor shall construct the arches in the following order:
 - 1 Complete the arch for the 20" sewer and remove its form,
 - 2 Complete the arch for the 30" sewer, leaving its form in place until the completion of the arch covering the intersection of both channels.
 - 3 Complete the larger arch and remove the forms for same before building the brick wall at the east end of same.
- 4 The contractor shall, upon completion of the brickwork, fill all space existing between the top of the arches and the surface of the ground with earth, sand, or gravel free from large stones.
- 5 Manhole frame and cover to be furnished by the city but the contractor shall place same.

CITY OF LOS ANGELES
EAST BRANCH OF CENTRAL INTERCEPTOR SEWER
PLAN AND DETAILS
SHOWING CHANGES TO BE MADE IN
STRUCTURE
AT JUNCTION WITH HOLLENBECK ARROYO SEWER
SCALES NOTED
JUNE, 1913
HOMER HAMLIN, CITY ENGINEER

Drawn by G.D. Whittle
Checked by F.L. Weisenheimer 6-25-13

Approved: 6-26-13

Homer Hamlin
City Engineer
by [Signature]
Chief Deputy



Plan of Junction Chamber showing location of arches, arch forms, manhole, etc.
Scale 1/2" = 1'-0"
red lines show locations of arch centers
figures in circles represent numbers of arch centers