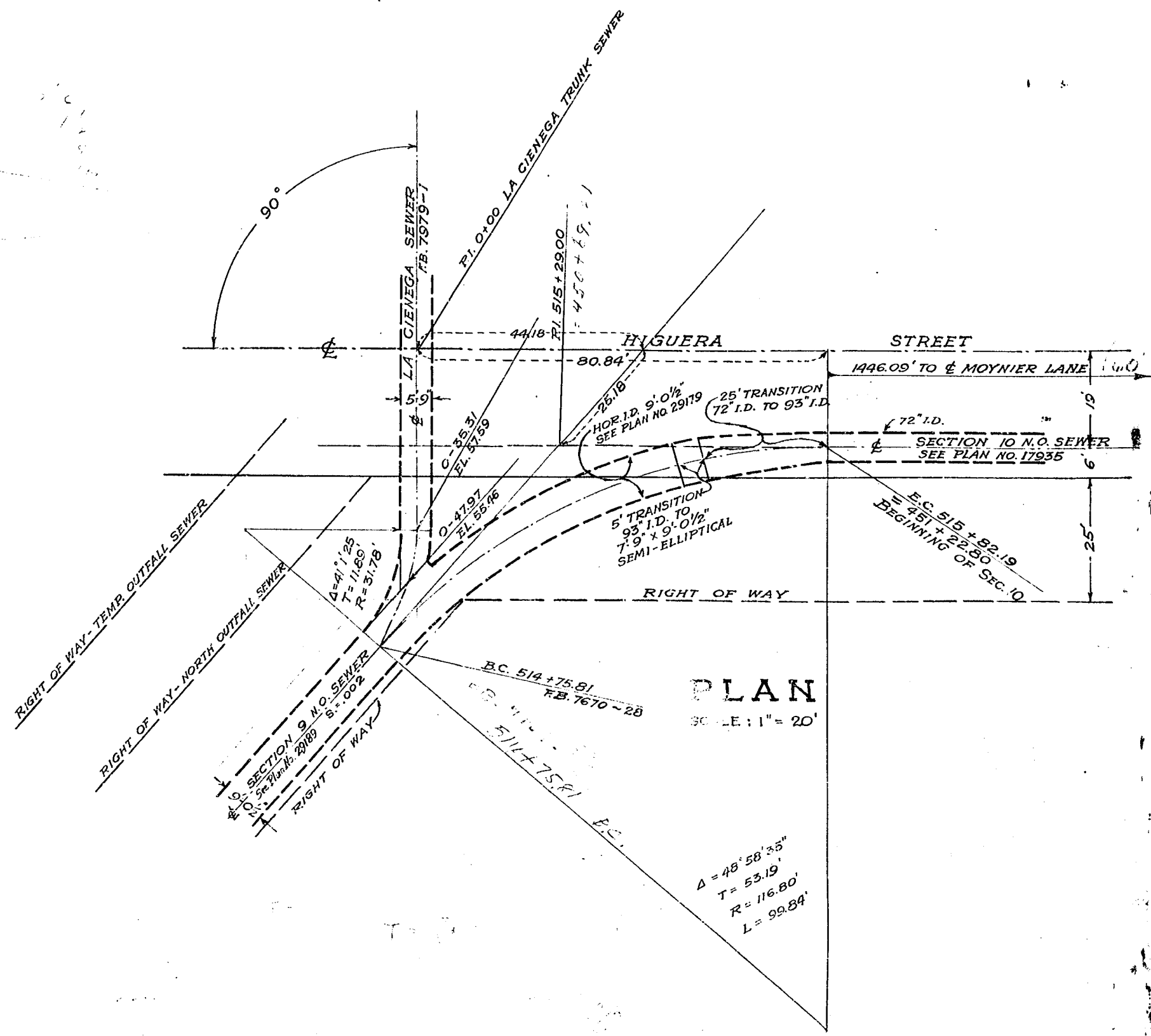


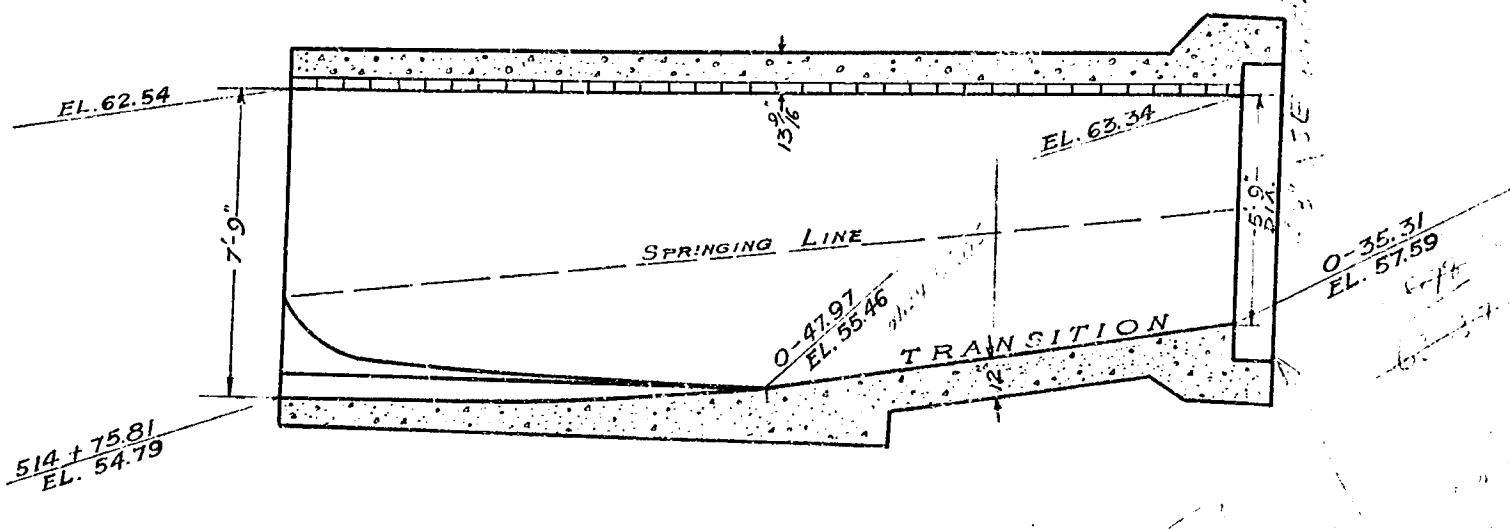
DETAIL PLAN OF JUNCTION OF
LA CIENEGA TRUNK SEWER AND
SECTION 9-NORTH OUTFALL SEWER
SCALE: 1" = 4'



PLAN
SCALE: 1" = 20'

"ADD 6.775 FEET TO ALL ELEVATIONS
CORRECTED TO U. S. C. & G. S. DATUM, ADOPTED JULY
16, 1923. ORDINANCE NO. 52,222."

SEWER COMPLETE



SECTION A-A
SCALE: 1" = 4'

CITY OF LOS ANGELES
PLAN SHOWING JUNCTION
OF
LA CIENEGA TRUNK SEWER & SECTION 9-NORTH OUTFALL SEWER
AND TRANSITION BETWEEN
SECTIONS 9 & 10-NORTH OUTFALL SEWER
NORTH OUTFALL SEWER

SCALES AS SHOWN

See Profile No. 29189 Section 9 N.O.S.

APPROVED *John A. Griffin*
CITY ENGINEER
June 19-1924

APPROVED *H.A. Van Norman*
CONSULTING ENGINEER
June 14-24