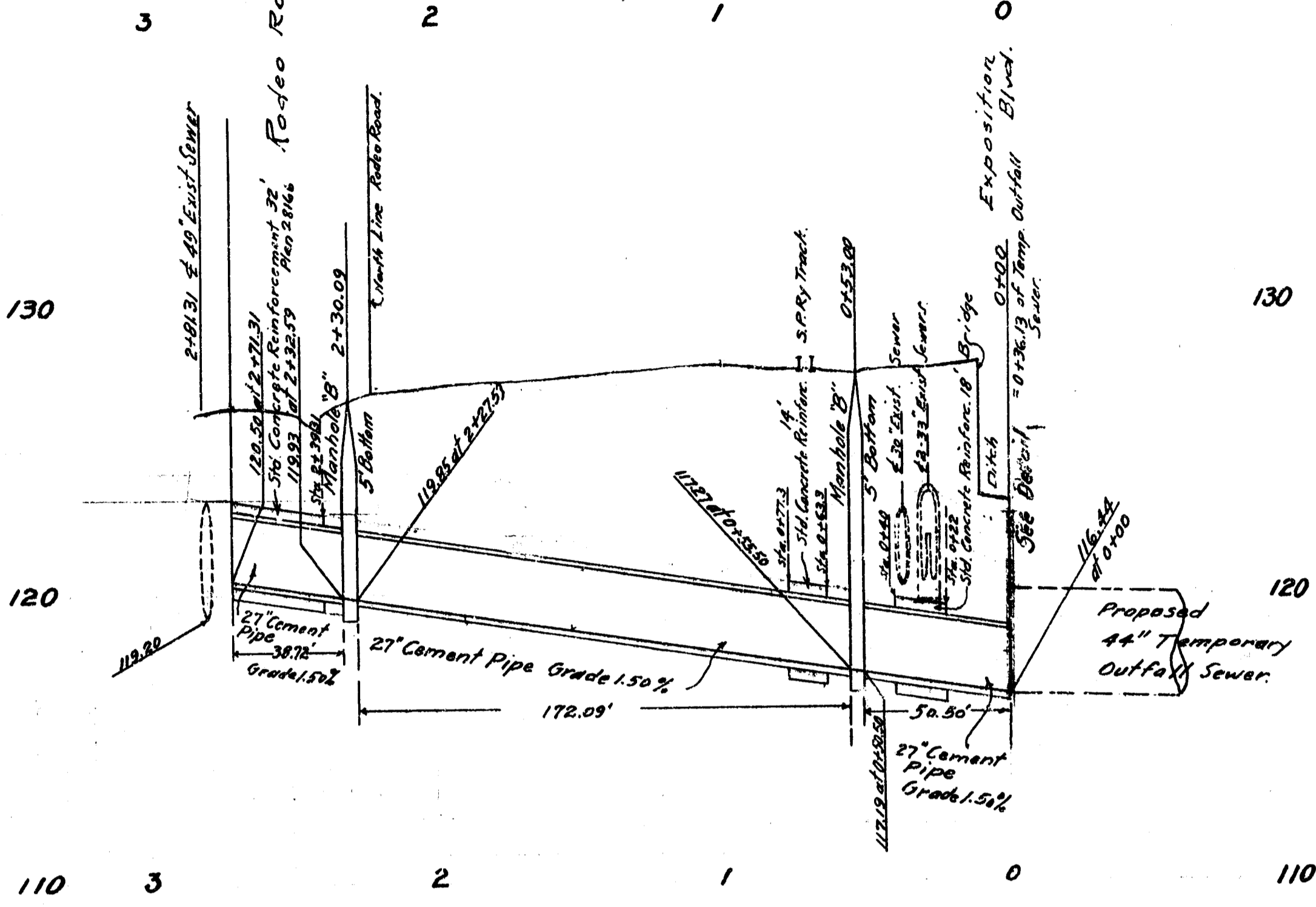


**PROFILE**

Vert. 1" = 4'  
 Hor. 1" = 40'  
 F.B. 6981-54

*Bill of Material*

- 262 lin. ft. 27" Cement Pipe
- 2 Std. Manhole Frame & Cover Sets
- 10 - 3/4" Round Iron Bars - Manhole Steps
- 4000 Brick
- 14 Cu.Ys. Sand
- 10 " " Gravel
- 35 Bbls Cement.



ADD 5.775 FEET TO THESE ELEVATIONS  
 TO CORRECT TO U. S. G. S. DATUM.  
 ADOPTED JULY 1, 1925, ORDINANCE NO. 52222

CITY OF LOS ANGELES

**EXPOSITION BOULEVARD  
 TEMPORARY OUTFALL SEWER.**

PLAN & PROFILE  
 OF

**CONNECTION FROM SEWER IN  
 RODEO ROAD.**

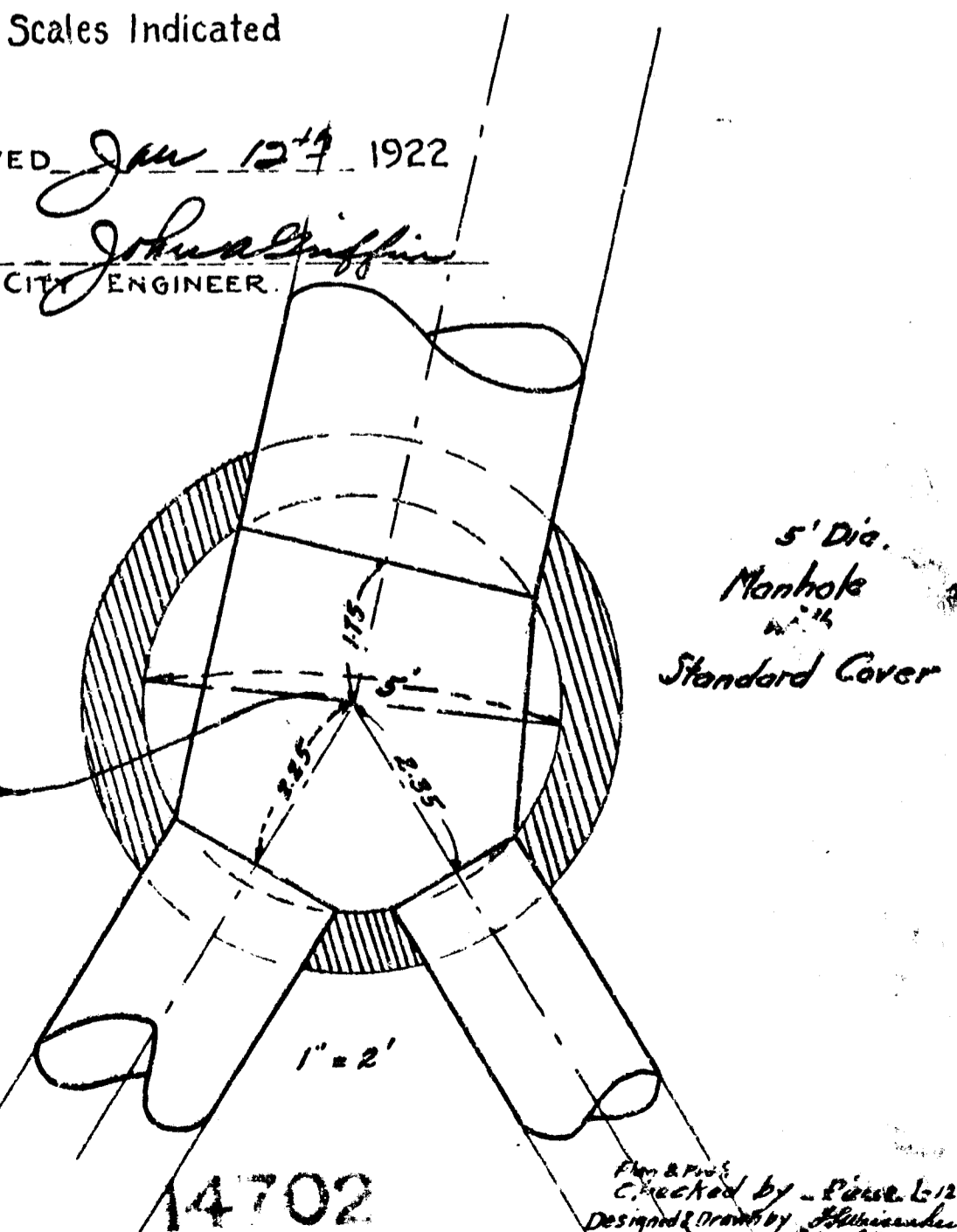
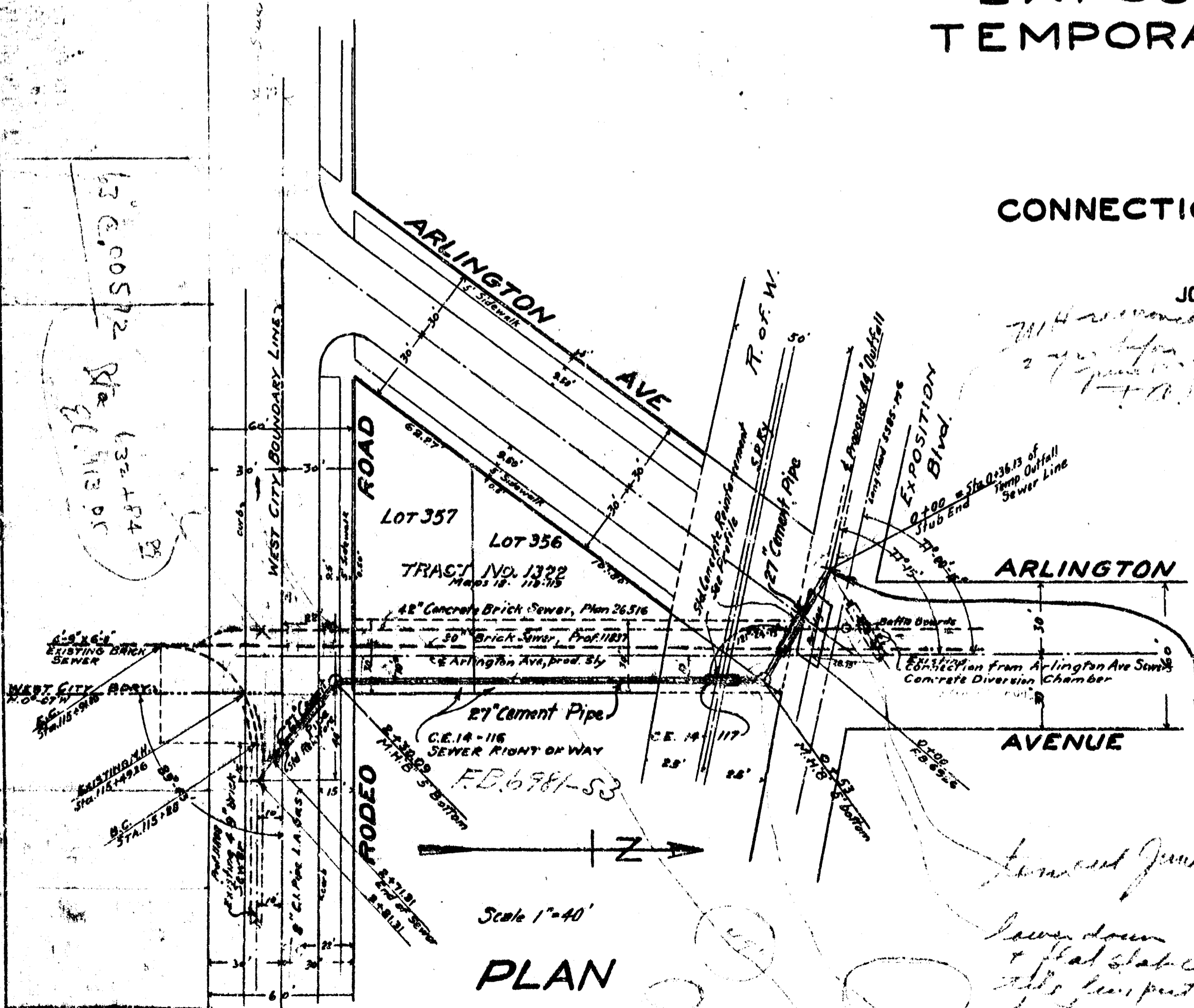
JOHN A. GRIFFIN

CITY ENGINEER.

Scales Indicated

APPROVED *Jan 12 1922*

*John A. Griffin*  
 CITY ENGINEER.



14702

14702

14702

Checked by - *June 12 1922*  
 Designed & Drawn by *John A. Griffin*  
 Approved by *John A. Griffin*