

CITY OF LOS ANGELES
SPECIAL JUNCTION CHAMBER
 FOR SEC 29 OF THE NORTH OUTFALL SEWER
 IN
WASHINGTON STREET
 AT THE INTERSECTION OF
SANTEE STREET

Scales as Shown

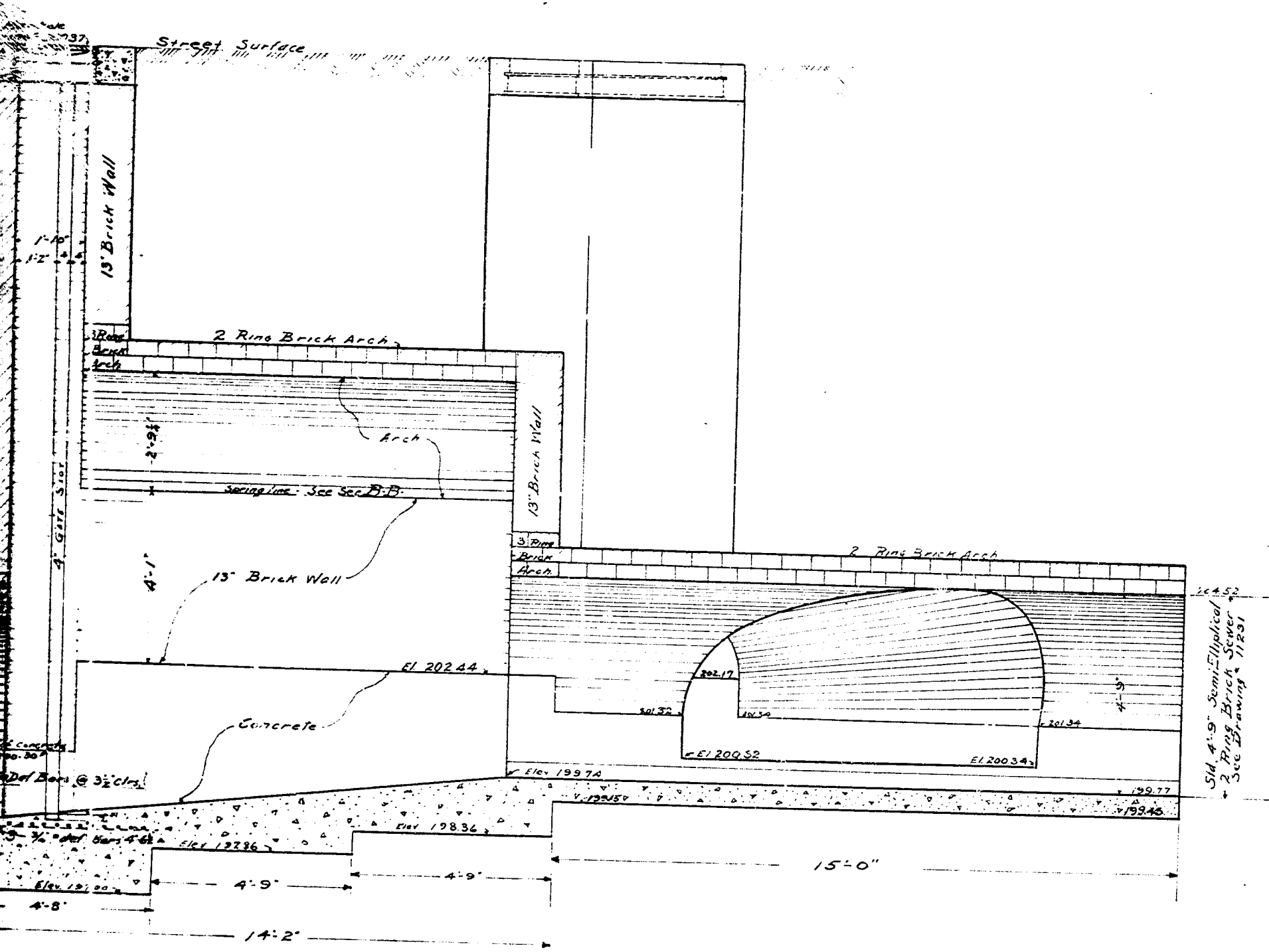
JOHN C. SHAW
 CITY ENGINEER

APPROVED Feb. 1, 1926

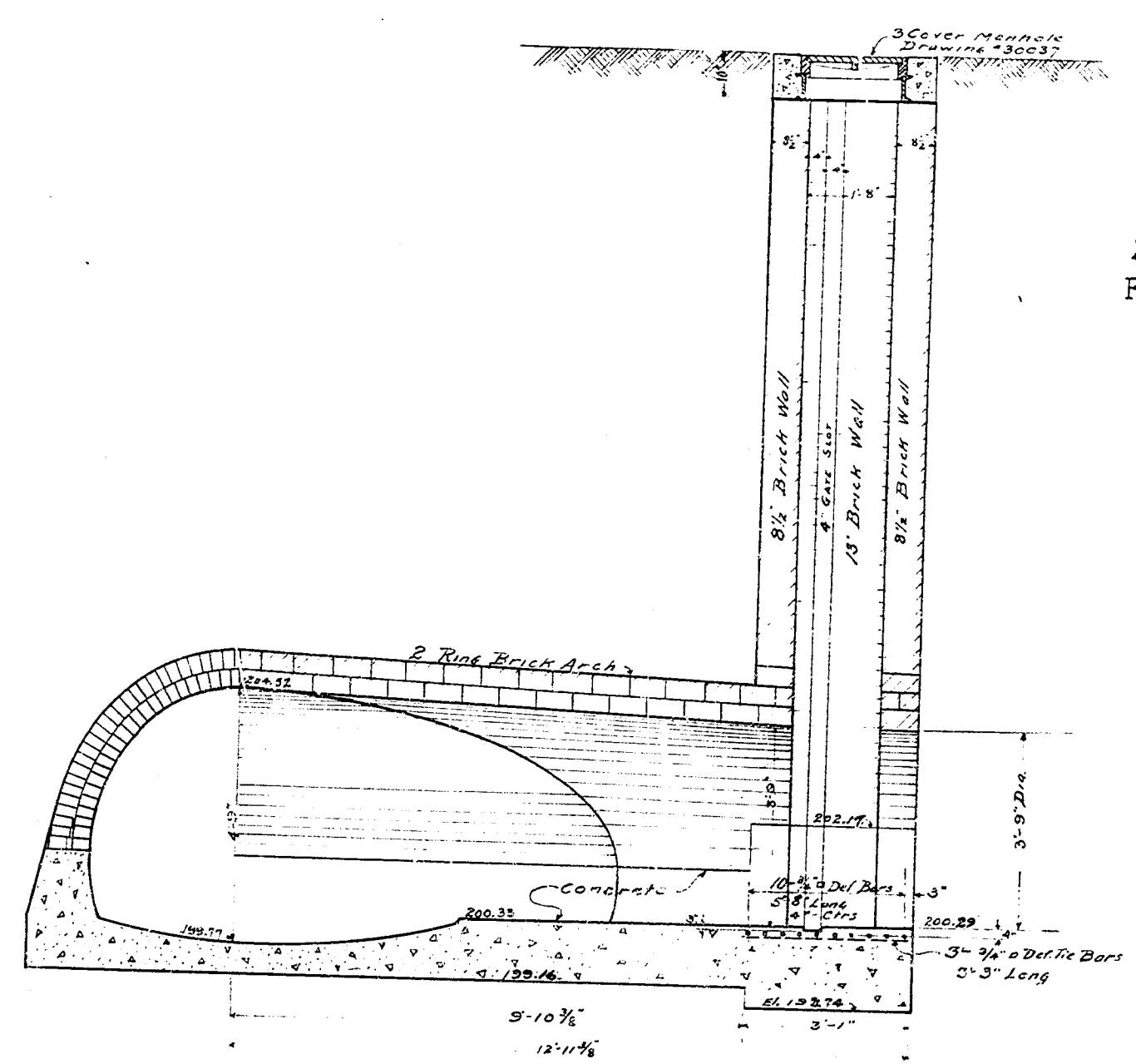
John C. Shaw
 CITY ENGINEER

SUMMARY OF MATERIALS

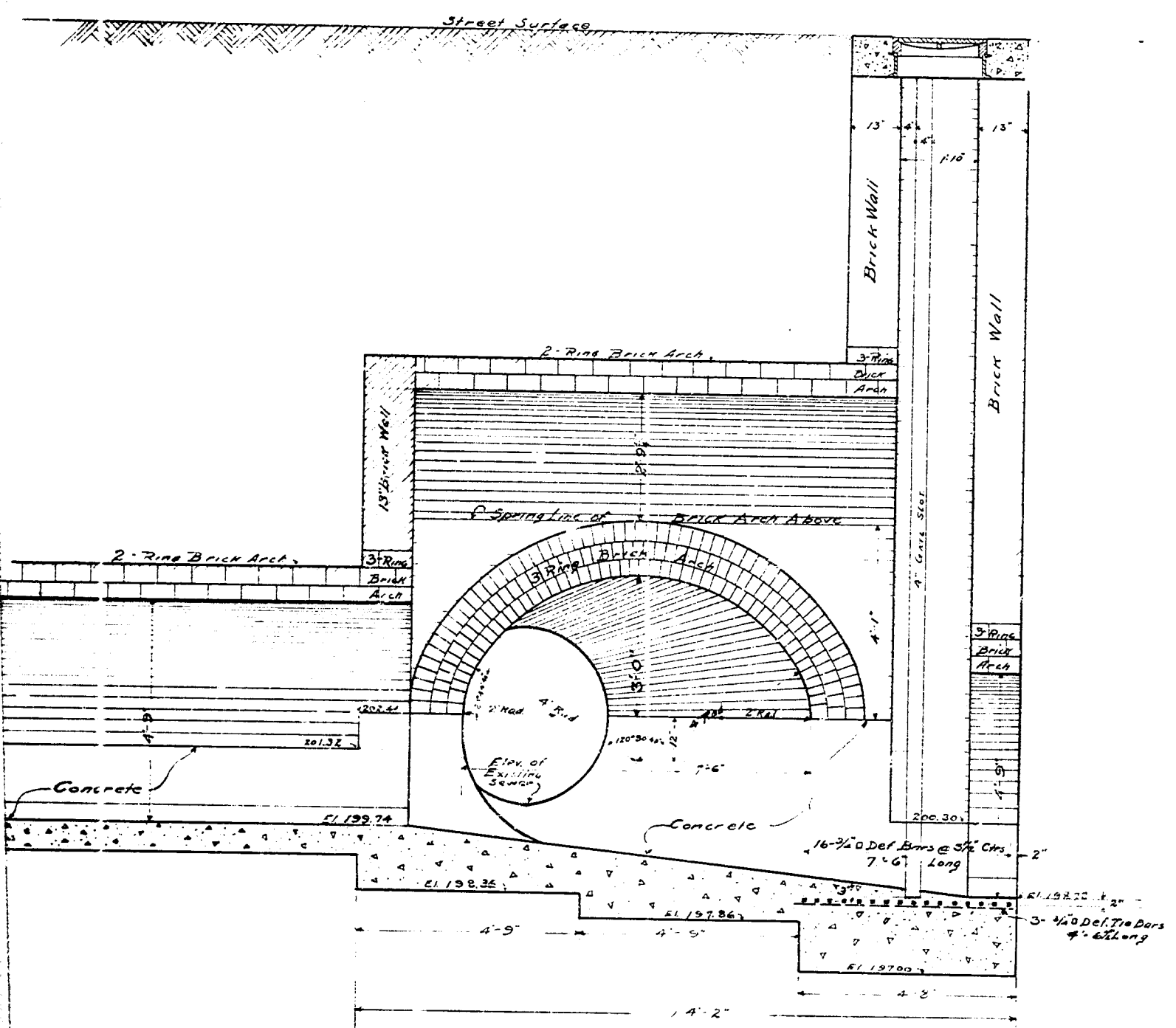
Cement	56 Bbls.
Rock	23 Tons
Concrete Sand	16
Mortar Sand	19
Brick	17500
Steel Bars - 16-3/4" def.	7-6'
10-3/4" def.	3-3'
3-3/4" def.	3-3'
Manhole Cover Castings	30037
1-3" Cover Drawing	30037



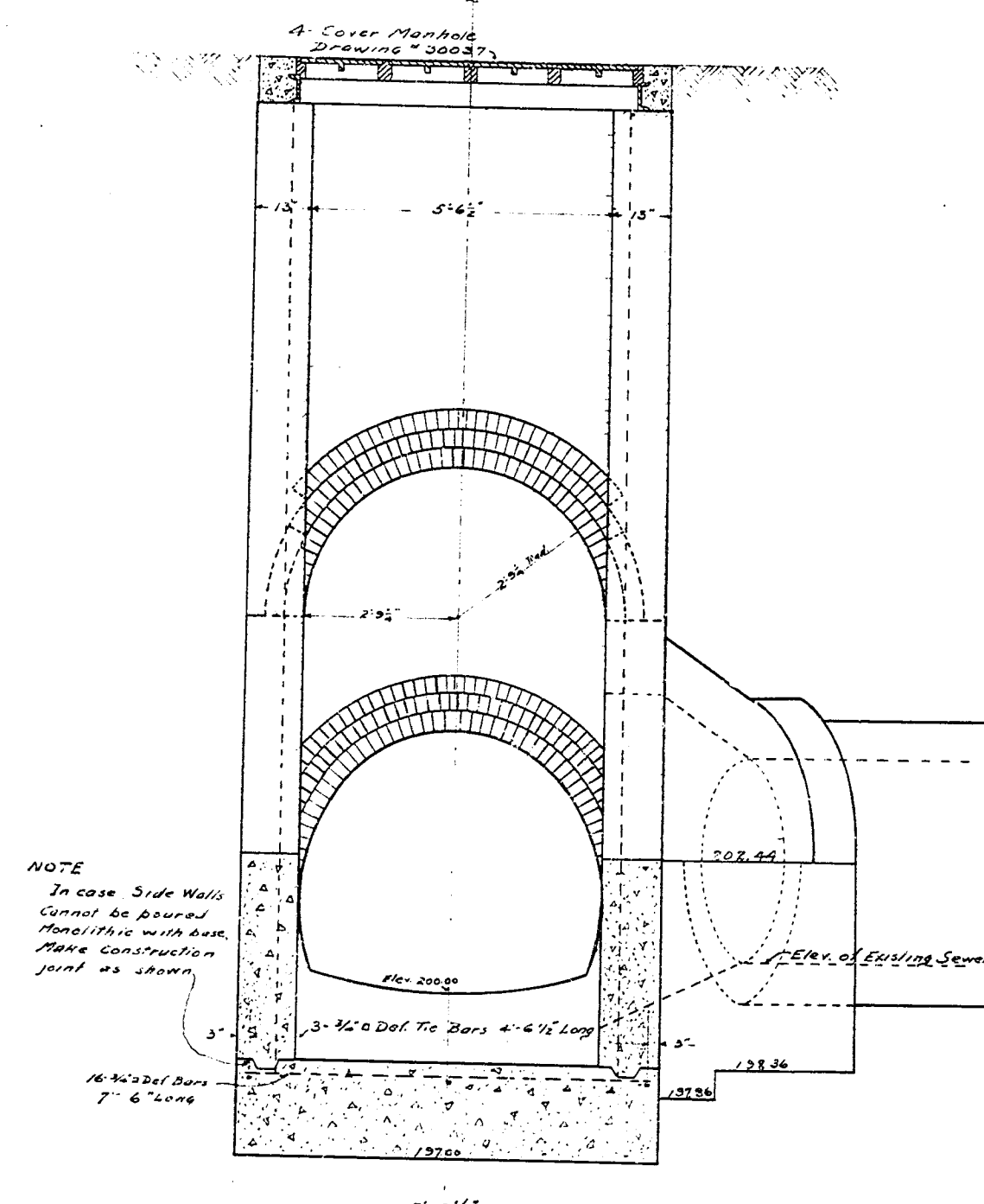
SECTION A-A
 Scale 1/2" = 1'



SECTION C-C
 Scale 1/2" = 1'

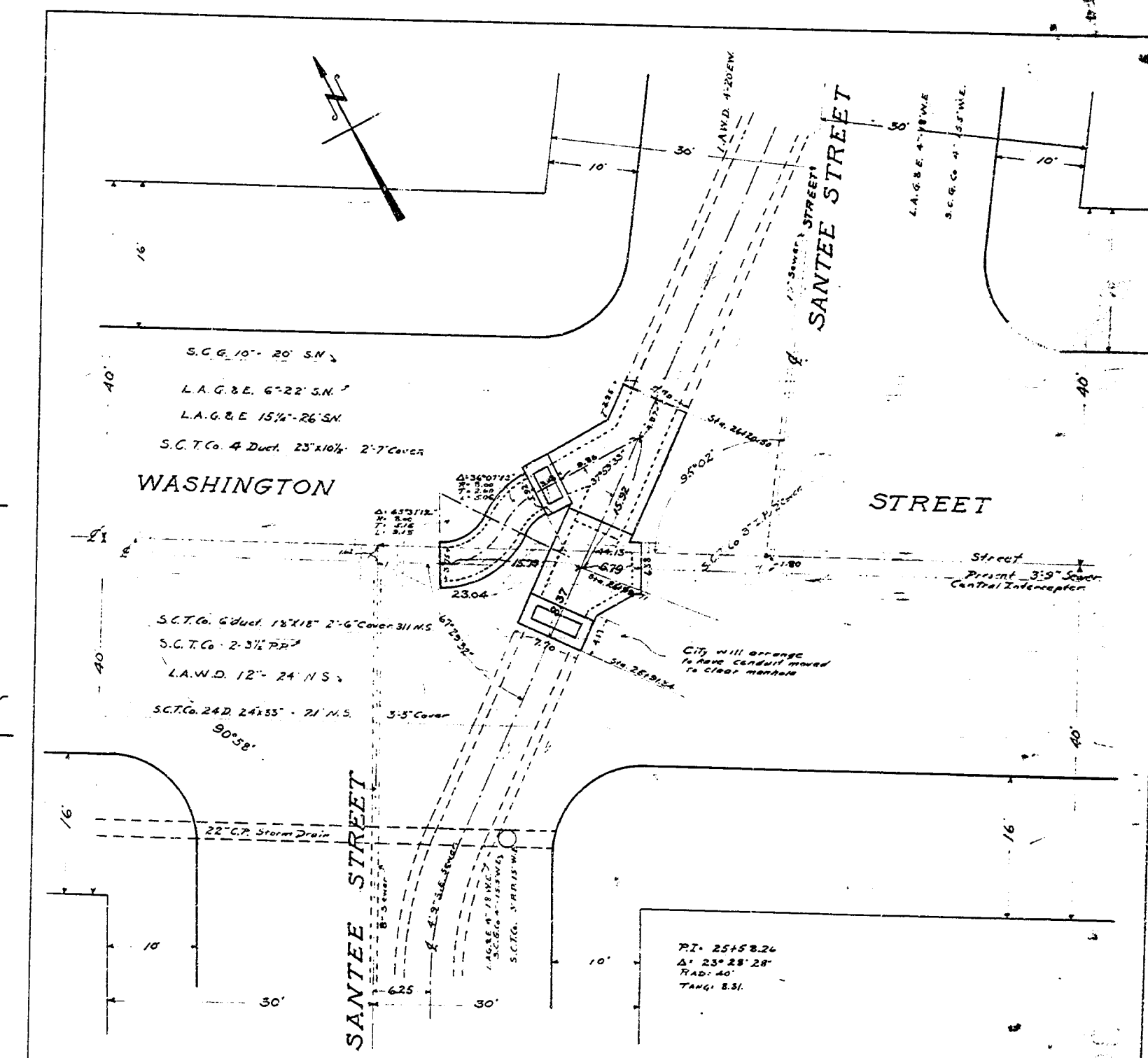


SECTION B-B
 Scale 1/2" = 1'



SECTION D-D
 Scale 1/2" = 1'

NOTE
 In case Side Walls
 Cannot be poured
 Monolithic with base,
 Make construction
 joint as shown



LOCATION PLAN
 Scale 1" = 10'

Designed by C.M. Conn
 Drawn by C.M. Conn
 Checked by W.D. Greenlee
 Approved by C.M. Conn

30060

30060 30060

