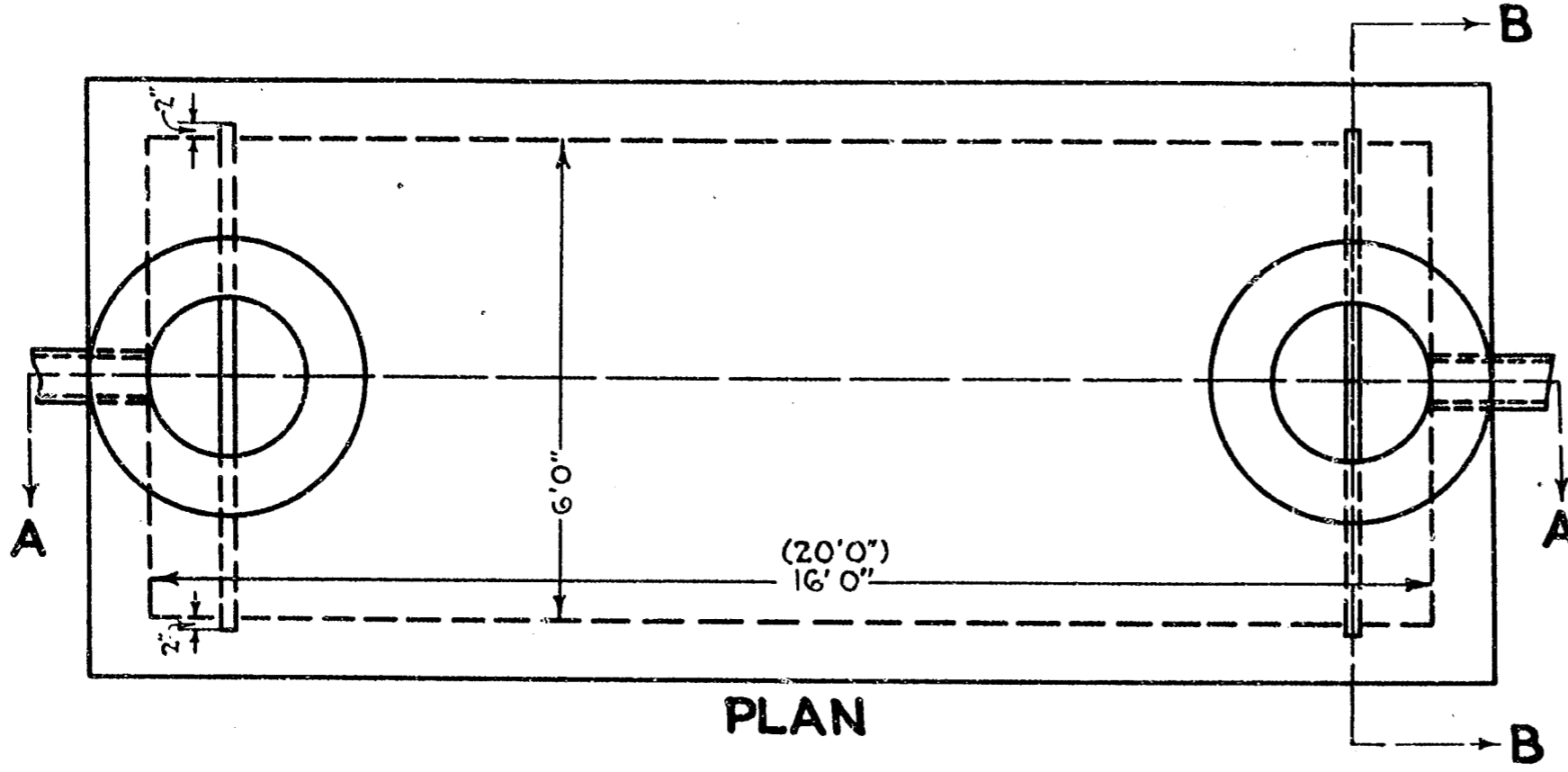
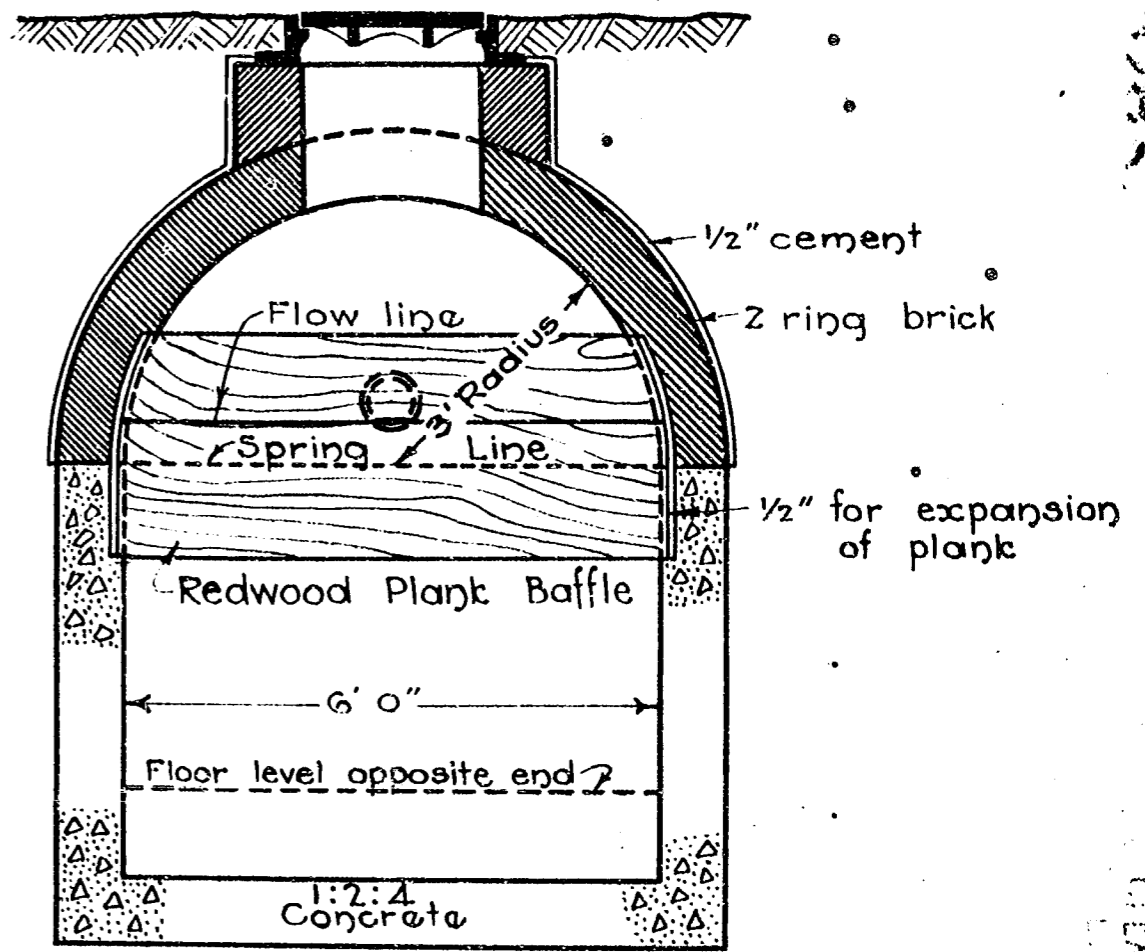


58001

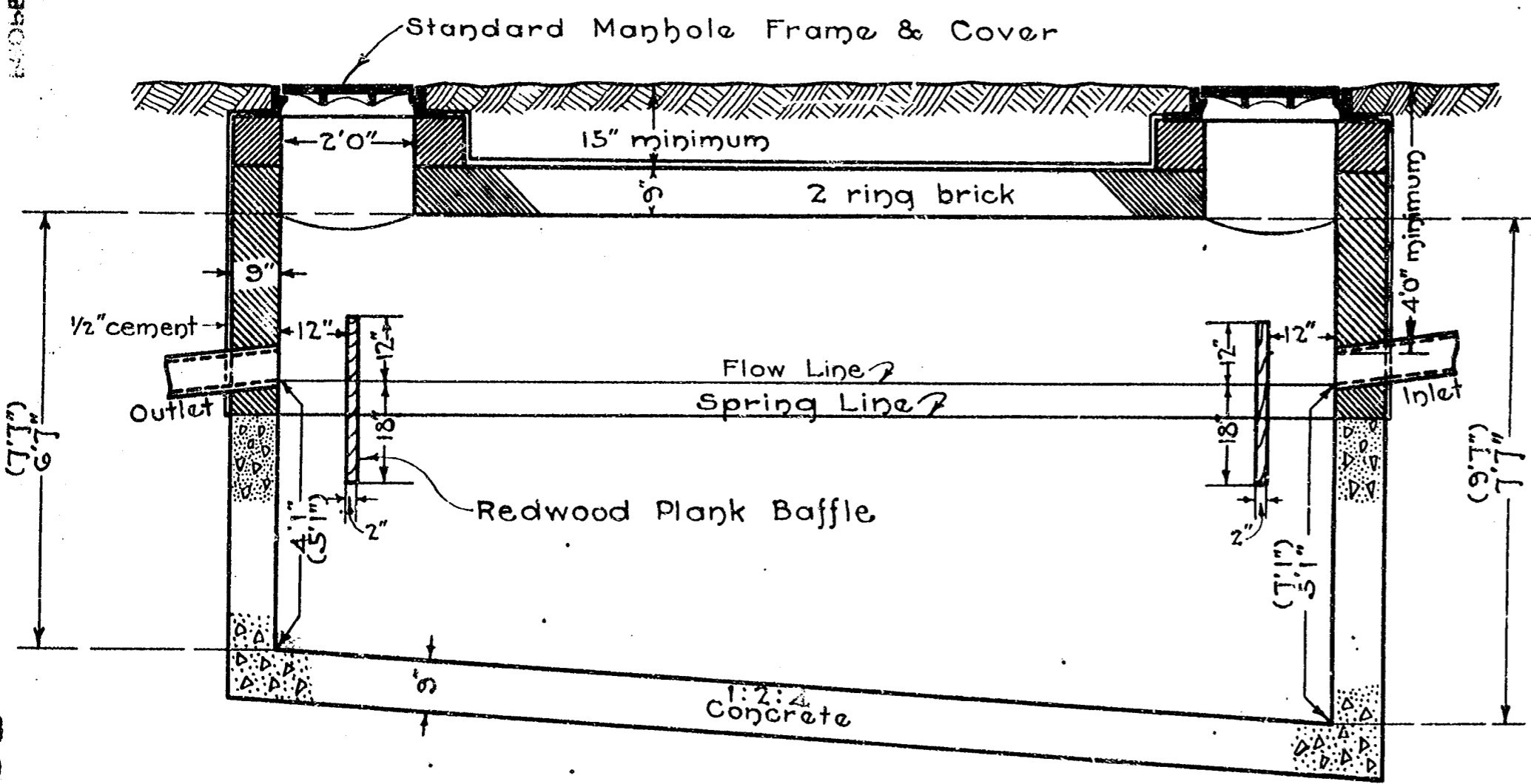
58001



PLAN



SECTION B-B



SECTION A-A.

SEE LATER PLAN NO. B-1658

**CITY OF LOS ANGELES
STANDARD SEPTIC TANK**

FOR 60 PERSONS

JOHN A. GRIFFIN CITY ENGINEER

Approved *May 8* 1923.

John A. Griffin
City Engineer.

NOTES

1. Specifications No 123 New Series.
2. Standard Manhole Cover and Frame, See Plan No 27548.
3. Redwood plank baffles to be cut 1 inch short of dimensions shown to allow for expansion.
4. Dimensions shown in parenthesis are for tank of capacity for 100 persons, all other details to be identical.

DESIGNED BY PARKES
DRAWN BY MIDGLEY
CHECKED BY TAYLOR
APPROVED BY

DESIGNED BY PARKES
DRAWN BY MIDGLEY
CHECKED BY TAYLOR
APPROVED BY

58001

58001

29061

29061

DESIGNED BY-PARKES
DRAWN BY-MIDGLEY
CHECKED BY-TAYLOR
APPROVED BY-