

DAILY CAPACITY 34,000 GALLONS

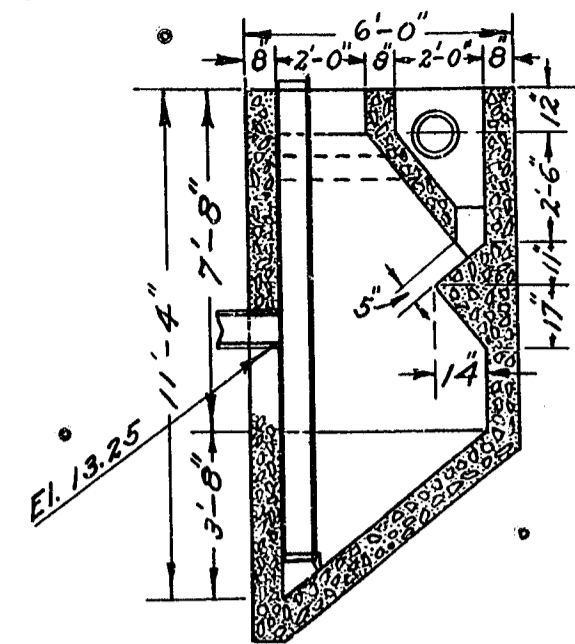
DAILY CAPACITY 10000 GALLONS

CITY OF LOS ANGELES  
 PLAN AND SECTIONS OF  
 IMHOFF SEWAGE DISPOSAL PLANTS  
 DESIGNED FOR TREATMENT OF  
 10,000 AND 34,000 GALLONS OF SEWAGE PER DAY  
 A.C. HANSEN, CITY ENGINEER  
 SCALE 1" = 4 FEET

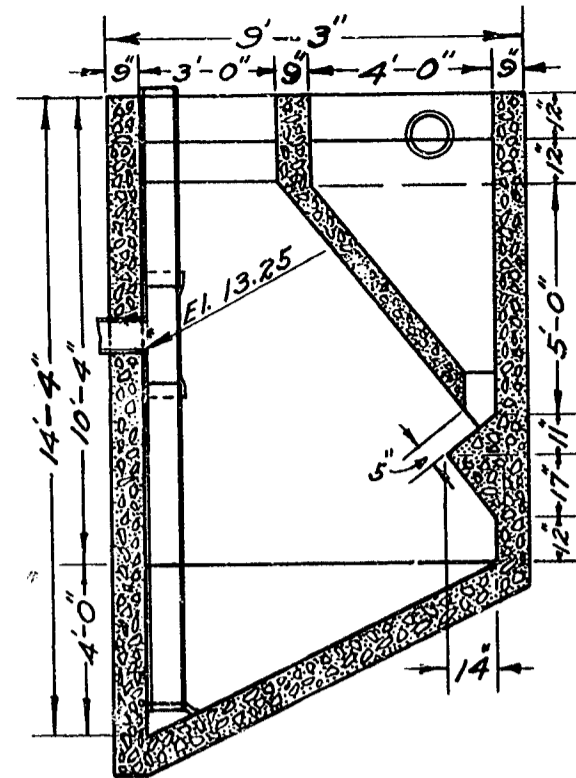
- NOTES
1. For location and contour plan see Plan No. 28017.
  2. All concrete in treatment tank to be reinforced, see Plan No. for details.

APPROVED \_\_\_\_\_ 1918  
 CITY ENGINEER.

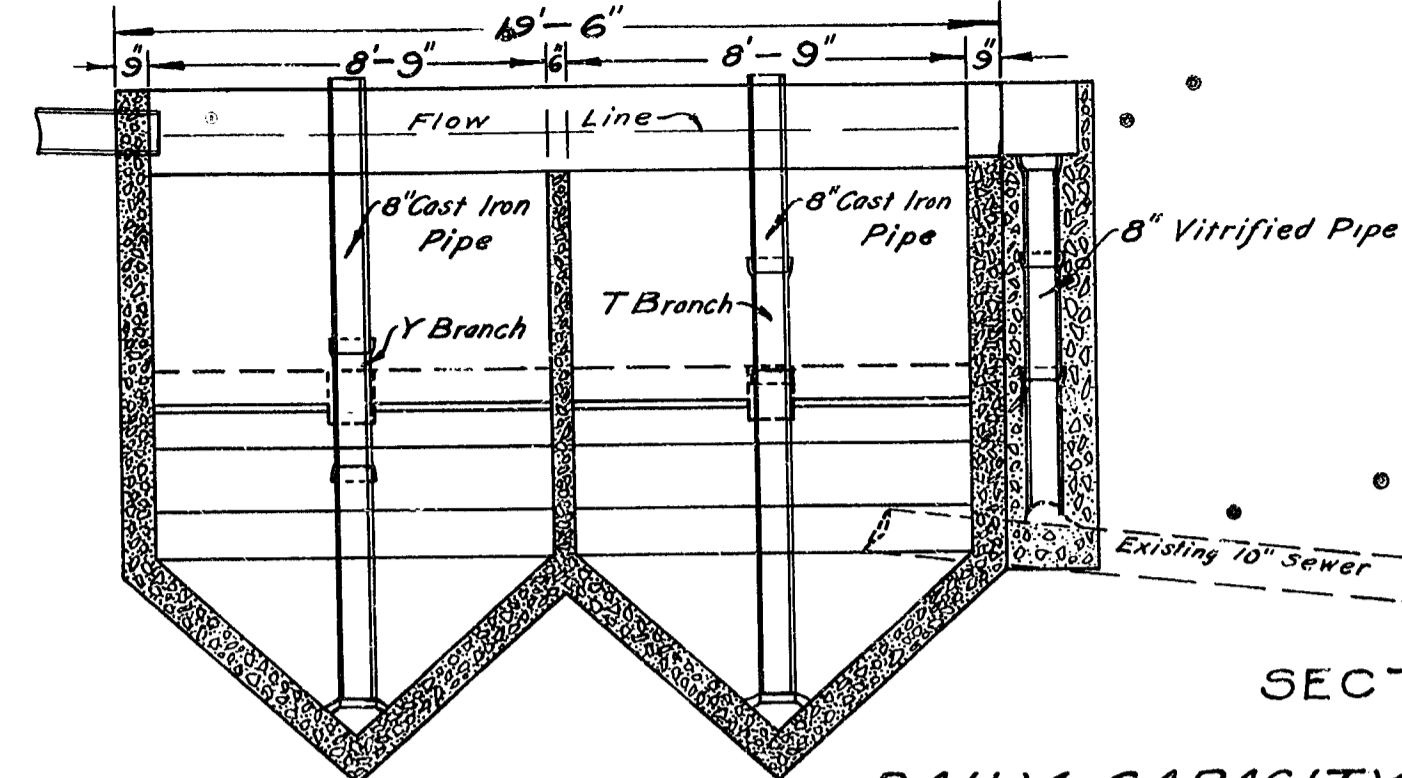
DESIGNED BY *Mark P. ...*  
 DRAWN BY *Sawyer*  
 CHECKED BY



SECTION B-B

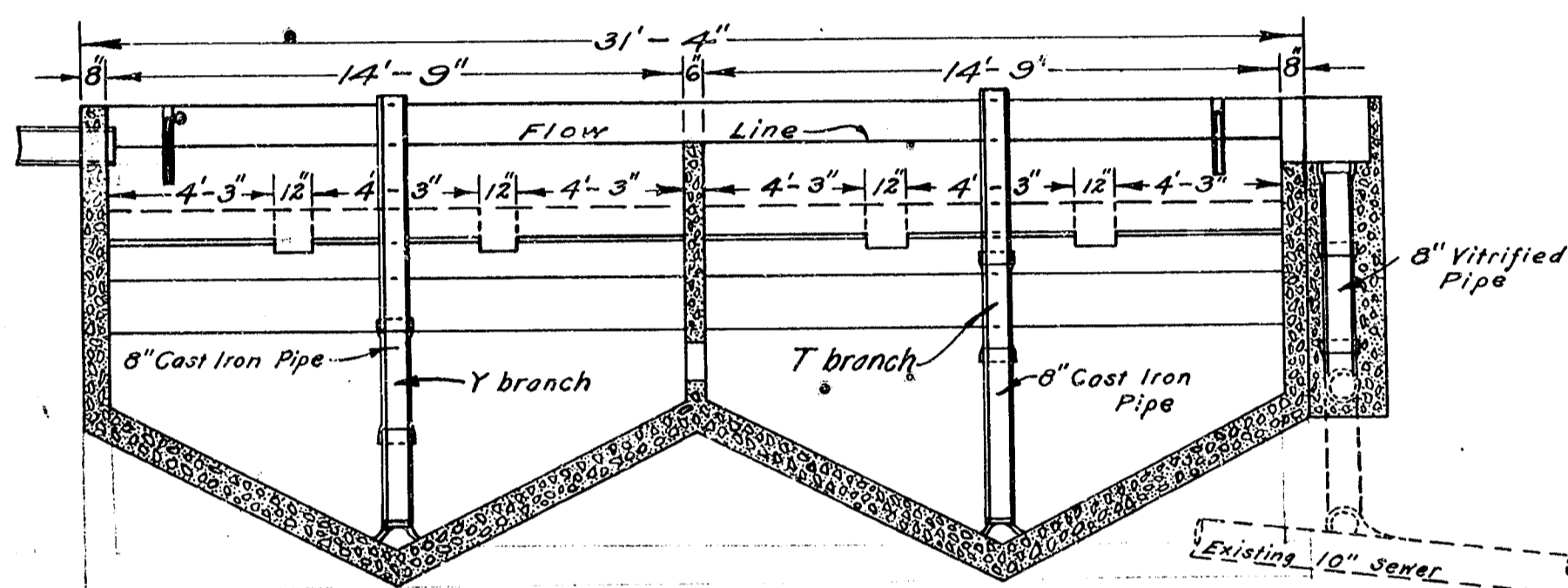
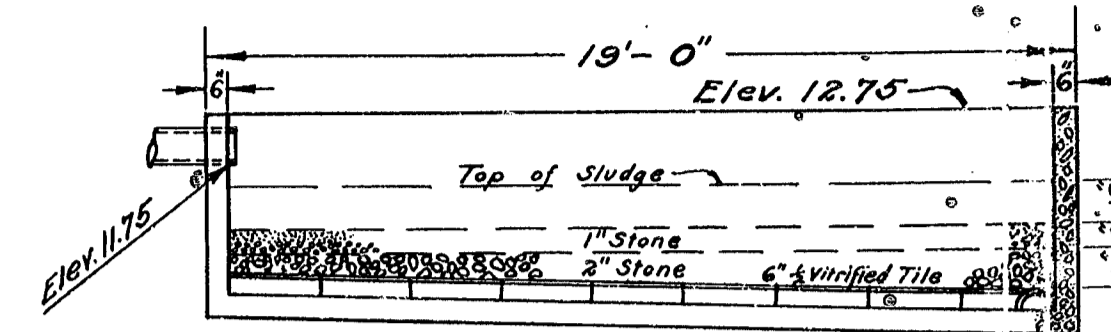


SECTION D-D



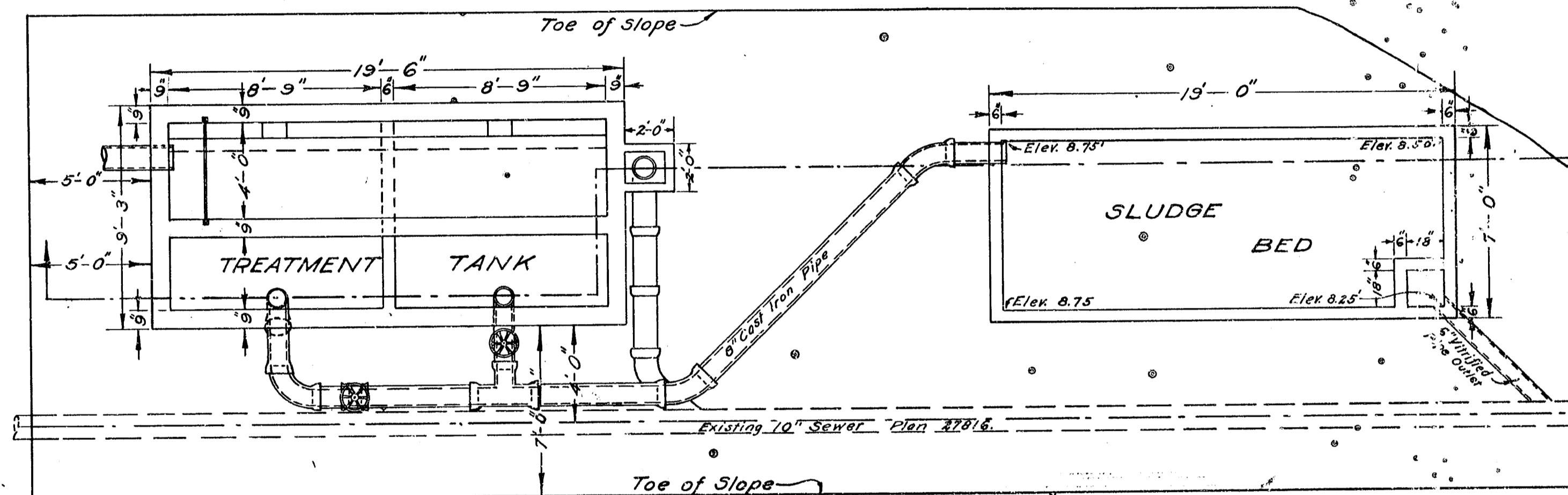
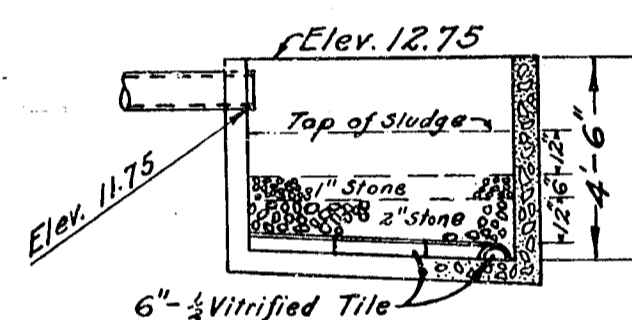
SECTION C-C

DAILY CAPACITY 34,000 GALLONS



SECTION A-A

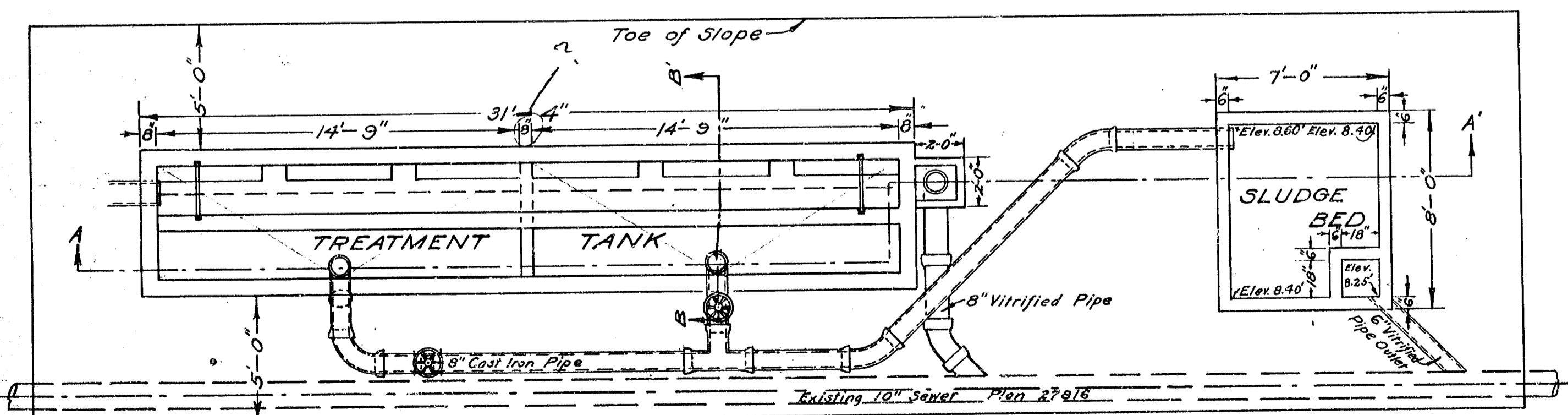
DAILY CAPACITY 10000 GALLONS



PLAN

CITY OF LOS ANGELES  
 PLAN AND SECTIONS OF  
 IMHOFF SEWAGE DISPOSAL PLANTS

DESIGNED FOR TREATMENT OF  
 10,000 AND 34,000 GALLONS OF SEWAGE PER DAY  
 A.C. HANSEN, CITY ENGINEER  
 SCALE 1" = 4 FEET



PLAN

-NOTES-

1. For location and contour plan see Plan No. 28017.
2. All concrete in treatment tank to be reinforced, see Plan No. for details.